

Presbyterian Medical Services Head Start & Early Head Start

Serving Children & Families in Sandoval, San Juan, Santa Fe and Torrance Counties



ANNUAL REPORT

2020-2021

TABLE OF CONTENTS

- * Messages from our Leaders
- * About PMS Head Start & Early Head Start
- * Program Governance
- * Financial Stewardship & Responsibility
- * Community Need & Enrollment
- * School Readiness
- * Parent and Community Engagement



Message from the PMS PRESIDENT/CEO



To Our Head Start & Early Head Start Community:

The official definition of resiliency is “the capacity to recover quickly from difficulties; toughness”. I don’t know if there is a better word that defines our employees, students, and parents. The ability to navigate a worldwide pandemic with the class and dedication we have seen is a reflection of the depth of care and level of importance we see in our young students.

Delivering early child education is a vital service. What our PMS staff does is important to individuals, families, and communities. All families regardless of their circumstance deserve the opportunity to access quality educational services. Our dedicated Head Start and Early Head Start teams continue to bring these important services to children and their families. At Presbyterian Medical Services we are proud to have these great frontline workers providing such excellent quality services to and in our communities.

Sincerely,

Steven C. Hansen, President/CEO

Message from the PMS BOARD OF DIRECTORS

Dear PMS Head Start parents, staff and community,

On behalf of the Board of Directors of PMS, I want to express my gratitude to each of you for your patience, persistence and trust especially during this past 18 months. The continuous changes in the health and safety landscape have indeed been challenging. Throughout, your loyalty to the program has made THE difference in extraordinary ways.

It is a true indication of resilience when a program can continue to maintain consistency and remain true to its mission and purpose, while holding to the highest quality standards of excellence.

Thank you for holding steady and faithful for the sake of the children.

With sincerest respect,
Susan Keil Smith, Chair
Board of Directors





About

Presbyterian Medical Services Head Start & Early Head Start

Presbyterian Medical Services (PMS) is a nonprofit organization founded in 1969 and based in Santa Fe, New Mexico. PMS is a prominent health and social service provider to the underserved and vulnerable populations across New Mexico.

The PMS mission is *to design and deliver quality, accessible, integrated health, education and human services in response to identified community needs of the multi-cultural people of the Southwest.*

PMS first began providing children’s services through the Head Start program in 1988 in San Juan County. The organization currently operates 28 Head Start and Early Head Start centers in four counties: Sandoval, Santa Fe, San Juan and Torrance. PMS also provides home-based services for pregnant women and children birth to three in three of the four counties.

Program Locations:

Sandoval County

Bernalillo HS & EHS
Cuba HS
Little Steps EHS
Rio Rancho HS & EHS
EHS Home Visiting

San Juan County

Aztec HS EHS
Bloomfield EHS

Carlton HS & EHS
Cottonwood HS & EHS
Kirtland HS
Little Feet EHS
Rocinante EHS

Santa Fe County

Agua Fria HS
Arroyo Seco HS
Busy Bugs EHS

Flores del Sol HS &EHS
La Comunidad de los Ninos
Little Paws EHS
Nambe HS
Pojoaque High School EHS
Pojoaque Middle School EHS
River Center EHS
Sweeney HS & EHS
Tierra Contenta HS & EHS
EHS Home Visiting

Torrance County

Estancia HS & EHS
Moriarty HS
Moriarty EHS
Mountainair HS
Mountainview HS
EHS Home Visiting

Shared Governance

PMS' Head Start and Early Head Start program employs a formal structure for program governance which includes a Board of Directors, a Policy Council, and Parent Committees.

The Board of Directors has the legal and fiscal responsibility to administer and oversee the program, while the Policy Council is responsible for the direction of the Head Start and Early Head Start programs.

Parents and guardians of Head Start and Early Head Start children are encouraged to participate in parent committees and serve on the Policy Council. Through the Policy Council, parents have a voice in decisions about how the program spends money, what children do in their classrooms, and how the program works with community partners.



PMS Head Start & Early Head Start

FINANCIAL STEWARDSHIP



PMS receives federal funds to operate the Head Start and Early Head Start programs. Consistent monitoring and controls are in place to ensure responsible and efficient use of taxpayers' money.

Annual Independent Audit Results

REDW, LLC conducted an audit of fiscal year 2020. The report provides the auditors opinion that PMS had no deficiencies nor material weaknesses in internal controls over financial reporting or program compliance.



Review by the Secretary (ACF/Office of Head Start)

The Office of Head Start conducted a Focus Area One monitoring review of the program in January 2020. The review found that the program is meeting all requirements of the Head Start Performance Standards. There were no deficiencies, areas of noncompliance, or areas of concern noted.



In-Kind / Non-Federal Share

The Office of Head Start is committed to covering 80% of the actual costs in operating the program. Donations, volunteer time, and donated space make up the remaining 20% of the program budget through the required non-federal match. This match reflects the partnership and commitment between the federal government and the local community to support our children and families. In 2020, in-kind contributions totaled **\$4,023,073**. We are thankful for this continued support of our program.

PMS Head Start & Early Head Start

FINANCIAL STEWARDSHIP



**TOTAL PUBLIC AND PRIVATE FUNDS
RECEIVED 2019-2020**

Head Start/Early HS Operations	\$15,333,932
Head Start/Early HS T/TA	\$239,317
	\$15,573,249

Other Income	\$17,300
Child Adult Care Food Proram	\$318,633
	\$335,933

CARES Act Funding \$1,034,357

Grand Total \$16,943,539



2019-2020 HS & EHS EXPENDITURES

Personnel	\$8,786,799
Fringe Benefits	\$2,267,335
Travel (out of state)	\$0
Equipment	\$216,000
Supplies	\$1,083,423
Contractual	\$122,051
Facilities / Construction	\$0
Other	\$1,710,844
CARES Act	\$842,534
Indirect	\$1,722,730
	Total \$16,751,716

PROPOSED 2020-2021 BUDGET

Personnel	\$9,537,206
Fringe Benefits	\$2,193,556
Travel (out of state)	\$124,500
Equipment	\$0
Supplies	\$764,500
Contractual	\$375,776
Facilities / Construction	\$0
Other	\$1,350,997
Indirect	\$1,226,714
	Total \$15,573,249

Community Need and Enrollment

PMS receives funding to serve 625 children and their families in Head Start, and 552 in Early Head Start. During program year 2020-2021, PMS served a cumulative total of 999 children from 915 families for Head Start and Early Head Start services. The average monthly enrollment, as percent of funded enrollment, was 74% in HS and 67% in EHS. The COVID-19 pandemic had a significant impact on enrollment. The program shut down for a period early in the pandemic, but gradually reopened facilities. Remote and in-person services were offered to participating families.

Our most recent community assessment indicates that there are approximately 22,273 children under age 5 in our service area. It is estimated that 27%¹ of these children, or 6,013, are eligible for the program based on income. Therefore, PMS served approximately 17% of those children who are eligible for the program.

The Head Start and Early Head Start program works to ensure all children are healthy and able to fully participate in learning opportunities. The COVID-19 pandemic did create challenges in making and keeping appointments for health and dental exams during this program year. It also impacted the completion of evaluations for children who may be eligible for special education and support services.

Approximately 730 children received health services, and nearly 600 children received dental care.



The program served 94 children with a formal Individualized Education Plan or Individualized Family Service Plan.



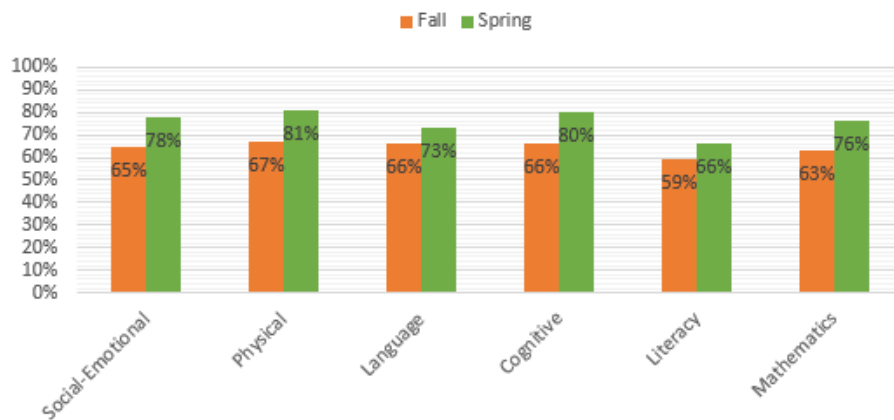
¹bis.health.state.nm.us

KINDERGARTEN READINESS

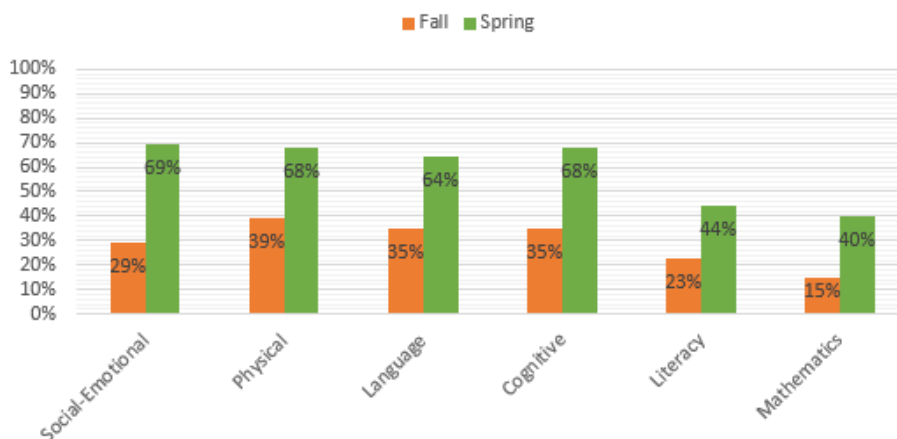
PMS' provides a comprehensive early childhood program to prepare children for their entry into Kindergarten. We support our Educators in developing strong adult-child interactions and learning environments conducive for positive educational outcomes.

Our teachers implement the *Creative Curriculum* and assess children's growth and development three times per year—Fall, Winter, Spring. The graphs below show the percentage of children who meet or exceed the widely held expectations for their age range in each of six learning areas in program year 2020-2021. Disruptions in service provision due to the COVID-19 pandemic did have an impact on curriculum delivery as well as observation and assessment processes.

% of Children Meeting/Exceeding Widely Held Expectations: **PreK 3 year olds**



% of Children Meeting/Exceeding Widely Held Expectations: **PreK 4 year olds**



ENGAGING FAMILIES

Engaging families in the Head Start and Early Head Start program is one of the primary goals of PMS. We believe that creating and sustaining ongoing partnerships with families is key to achieving positive educational outcomes for children and improving family well-being.

The Head Start & Early Head Start program provides many opportunities for families to engage in the program. Parents and guardians participate in parent/teacher conferences three times per year. Parents and staff develop and implement transition plans to help support the child and family when moving from one program to another. Participating parents work with staff to assess family needs and develop individualized goals and action plans.

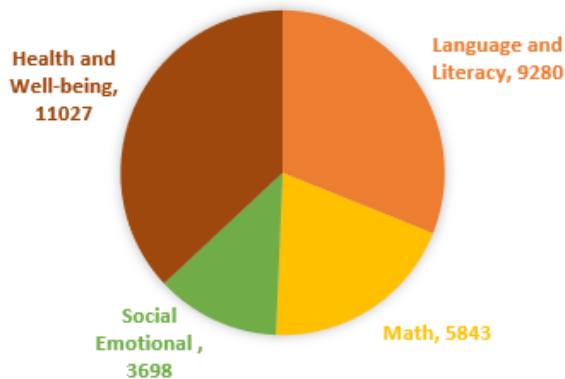
Families are encouraged to volunteer in the program as well as participate in parent committees and on Policy Council.

In 2020-2021, the COVID-19 pandemic impacted the program's ability to provide many in-person activities. However, parents were engaged in new remote learning processes and our family engagement program called ReadyRosie. The following page graphs the types of services provided to families in the program.

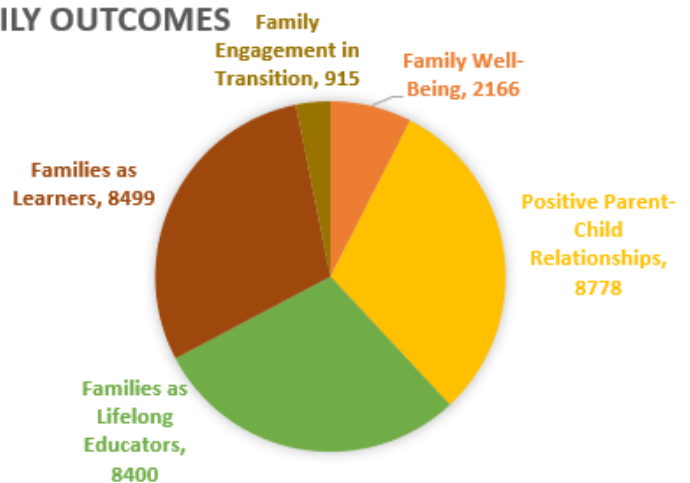
Parent Engagement through ReadyRosie

Skill development opportunities accessed by parents in 2020-2021

LEARNING OUTCOMES



FAMILY OUTCOMES





Family Services

