

# PRESBYTERIAN MEDICAL SERVICES | ESTANCIA HEAD START - KITCHEN REMODEL



ARCHITECT/ENGINEER



## CONTACTS:

**OWNER**  
PRESBYTERIAN MEDICAL SERVICES  
PATRICK DYER  
(505) 860-8391

**MP ENGINEER:**  
KB DESIGN  
CONTACT: KYLE BEST  
(505) 850-6092

**ARCHITECT**  
SCOUT DESIGN LLC  
SHANNON VANDUSEN  
(505) 414-6212

**ELECTRICAL ENGINEER:**  
E2 DESIGN CONSULTING SERVICES  
CONTACT: MIKE MORGAN  
(505) 400-1152

## DRAWING INDEX:

G001 DRAWING INDEX, PROJECT DESCRIPTION, CODE PLAN, ADA CLEARANCES  
A100 DEMO PLANS, FLOOR PLAN, REFLECTED CEILING PLAN, OPENING TYPE  
PM-001 MECHANICAL COVER AND NOTES  
P-101 PLUMBING WASTE AND VENT  
P-102 PLUMBING WATER  
M-101 MECHANICAL FLOOR PLAN  
E001 LEGEND + SPECIFICATIONS  
E101 POWER + LIGHTING, FLOOR PLAN - DEMO + NEW  
E601 RISER DIAGRAM + SCHEDULES

## LOCATION:



## CODE ANALYSIS

**APPLICABLE CODES**  
2021 NEW MEXICO COMMERCIAL BUILDING CODE  
2021 NEW MEXICO EXISTING BUILDING CODE  
2020 NEW MEXICO ELECTRICAL CODE  
2021 NEW MEXICO MECHANICAL CODE  
2021 NEW MEXICO PLUMBING CODE  
2021 INTERNATIONAL BUILDING CODE  
2021 INTERNATIONAL EXISTING BUILDING CODE  
2009 INTERNATIONAL FIRE CODE  
2017 ICC/ANSI 117.1  
2020 NATIONAL ELECTRIC CODE  
2021 UNIFORM PLUMBING CODE  
2021 UNIFORM MECHANICAL CODE  
2015 NATIONAL FIRE PROTECTION ASSOCIATION STANDARDS  
2015 NFPA: LIFE SAFETY CODE  
2021 NM ENERGY CONSERVATION CODE  
2021 IECC

**PROJECT DESCRIPTION**  
SECTION 404 IEBC. ALTERATION LEVEL 2. RENOVATION OF THE FACILITY'S KITCHEN;  
SCOPE INCLUDES DEMO OF 1 WALL, BUILT IN CASEWORK, INSTALLATION OF NEW 3 COMPARTMENT SINK, MINI SPLIT, REPLACEMENT OF APPLIANCES, AND INSTALLATION OF NEW WINDOW

**PROJECT ADDRESS**  
600 10TH STREET  
ESTANCIA, NM 87016

**PROJECT AREA**  
TOTAL EXISTING BUILDING: 1,938 GSF  
AREA OF SCOPE APPROXIMATELY: 165 SF

**CONSTRUCTION TYPE:** VB, NON-SPRINKLED

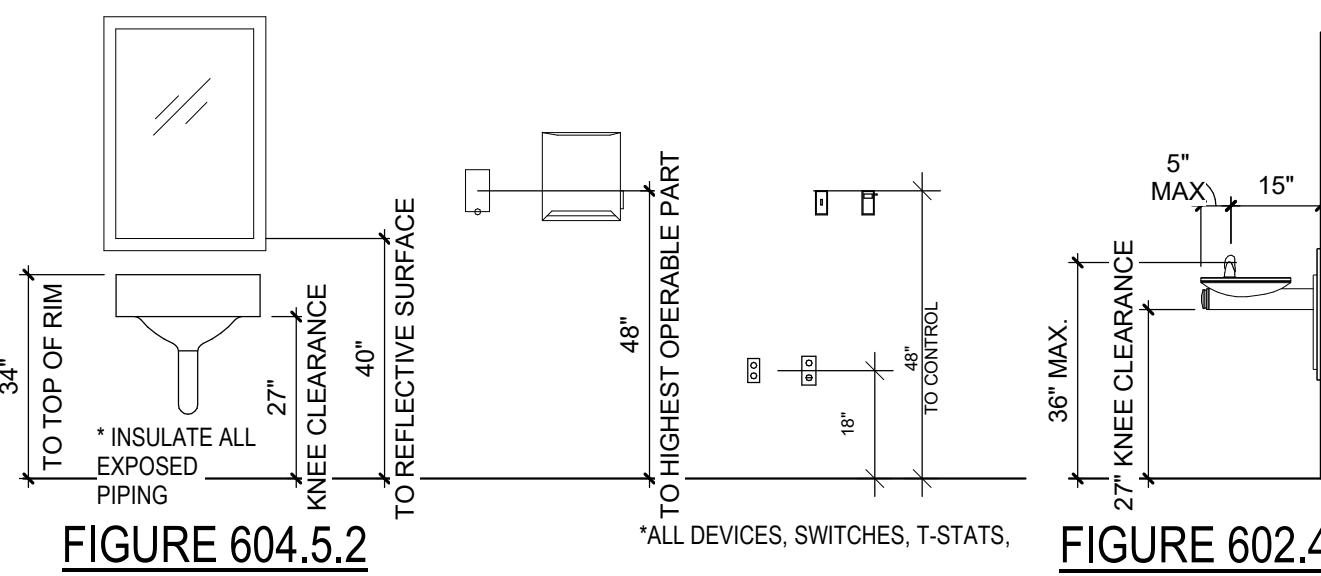
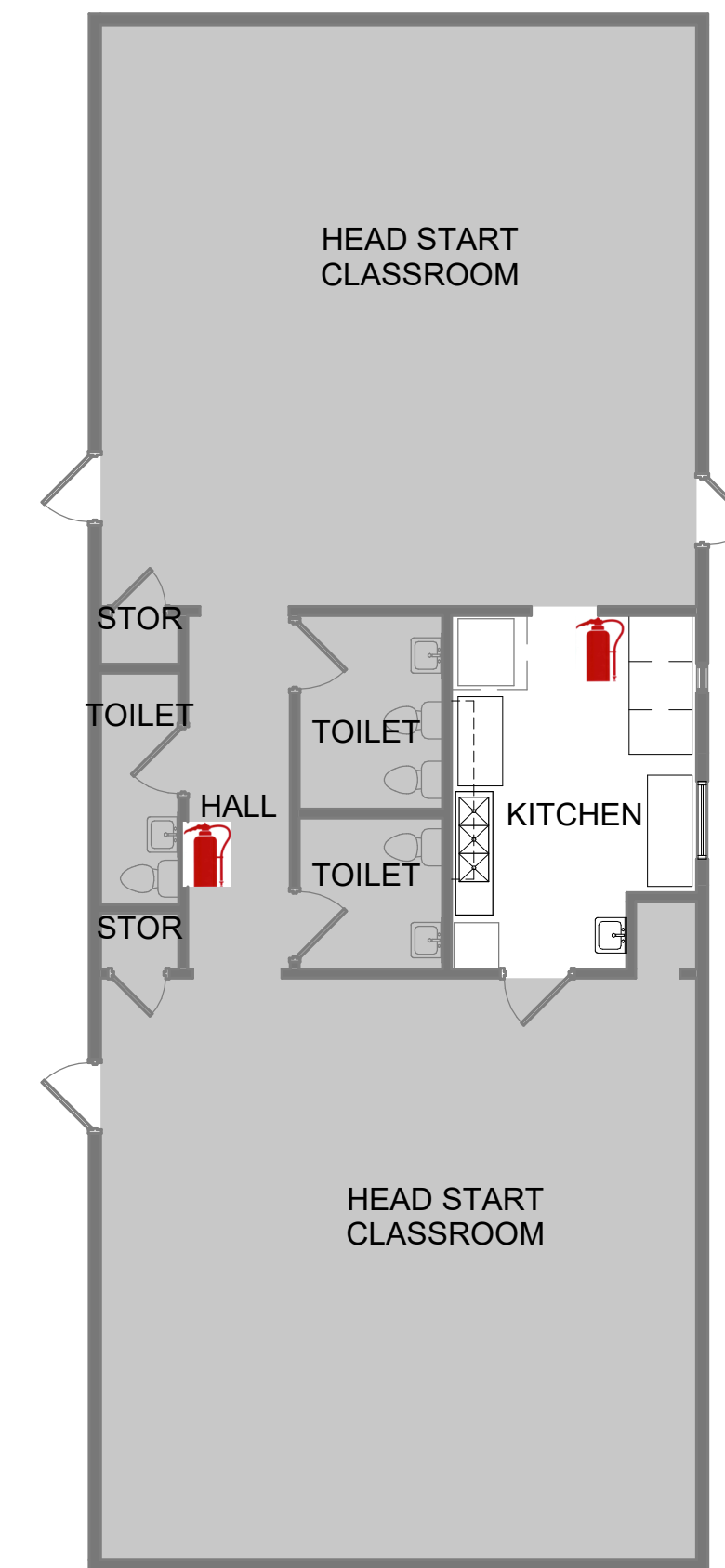
**USE & OCCUPANCY CLASSIFICATION (IBC SECTION 302.1)**  
E

**MEANS OF EGRESS**  
TRAVEL DISTANCE DOES NOT EXCEED MAXIMUM ALLOWABLE TRAVEL DISTANCE OF 200' (1017)  
REQUIRED NUMBER OF EXITS (1006.3.1) = 2; PROVIDED = 3

**PLUMBING FIXTURES (IBC CHAPTER 29)**  
PLUMBING FIXTURE COUNTS REMAIN THE SAME. OCCUPANCY HAS NOT INCREASED 20%. IEBC 810.

**FIRE EXTINGUISHERS**  
MINIMUM RATED SINGLE EXTINGUISHER: 2A-10BC.  
MAXIMUM TRAVEL DISTANCE BETWEEN FIRE EXTINGUISHERS: 75 FEET.  
REQUIRED EXTINGUISHER IN COMMERCIAL KITCHEN 906.1.2. = 1  
REQUIRED PER FLOOR 1,938/3,000 SF = 1  
PROVIDED: 2

**FIRE PROTECTION**  
EXISTING FIRE ALARM SYSTEM. CONTRACTOR SHALL PROVIDE DRAWINGS TO FIRE MARSHAL FOR ANY MODIFICATIONS OF THE FIRE ALARM SYSTEM.



**FIGURE 604.5.2**  
HEIGHT OF LAVATORIES

**FIGURE 602.4**  
SPOUT HEIGHT FOR WHEELCHAIR ACCESSIBLE DRINKING FOUNTAIN

## 2 MOUNTING HEIGHTS AND CLEARANCE REQUIREMENTS

3/8" = 1'-0"

## LIFE SAFETY PLAN SYMBOL LEGEND

- 180 ← MAXIMUM OCCUPANT LOAD FOR DOOR (SECTION 1005.1)
- 20 ← ACTUAL OCCUPANT LOAD FOR DOOR
- 34 ← DOOR WIDTH REQUIRED/ DOOR WIDTH PROVIDED (IN INCHES)
- 2 # OCCUPANTS
- NO WORK THIS AREA
- PATH/DIRECTION OF TRAVEL
- FIRE EXTINGUISHER CABINET

## 1 CODE PLAN

1/8" = 1'-0"

PMS ESTANCIA HEAD START - KITCHEN REMODEL

600 10TH STREET  
ESTANCIA, NM 87016

100% PERMIT DRAWINGS

REVISION DATE

DATE 8/12/25

PROJECT NO -

COVER SHEET, CODE ANALYSIS, LIFE SAFETY PLAN

SHEET NO.

G001



**GENERAL NOTES**

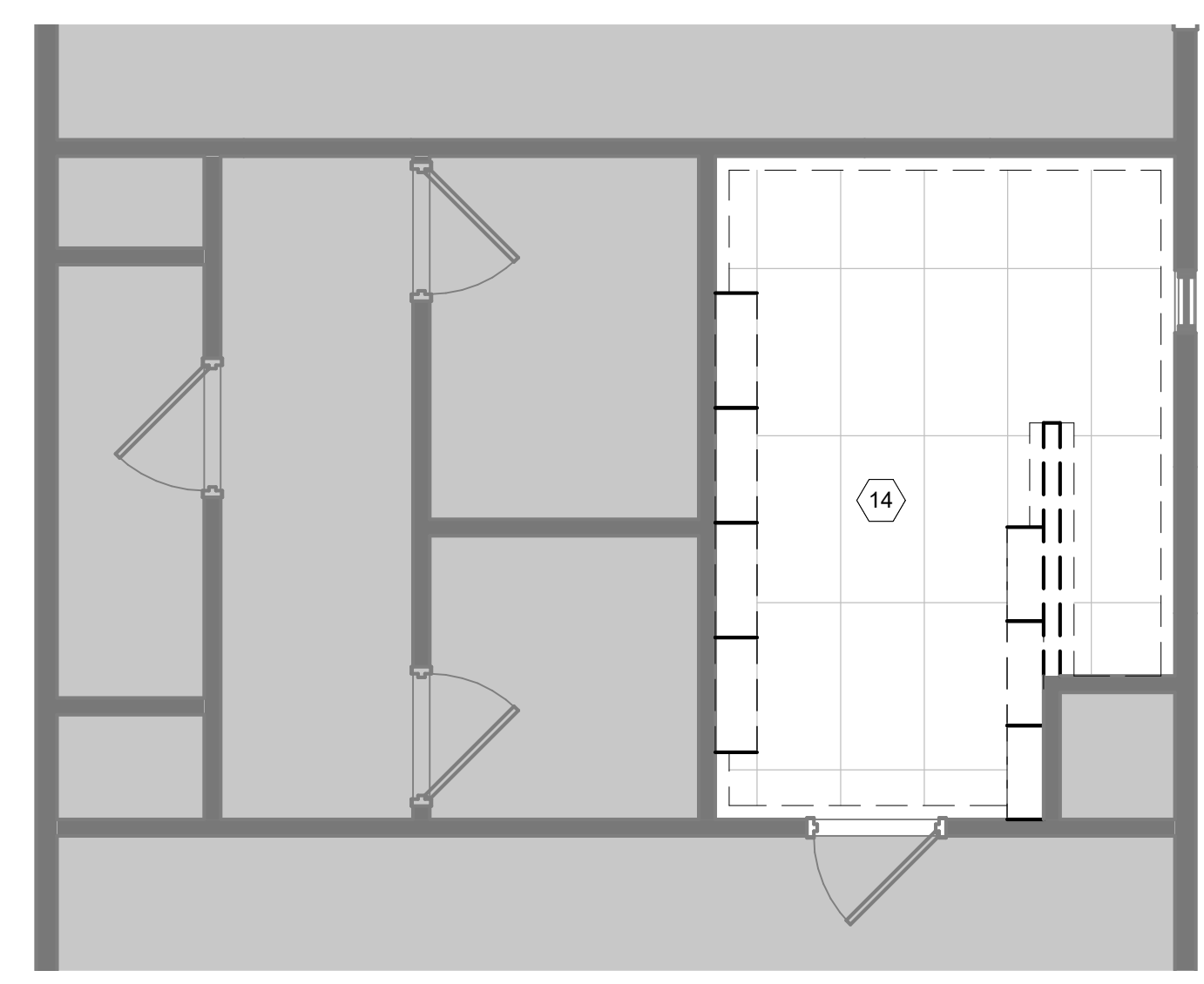
- A. ALL DIMENSIONS ARE FACE OF STUD UNLESS OTHERWISE NOTED.
- B. FIELD VERIFY ALL DIMENSIONS.
- C. DO NOT SCALE DRAWINGS, IF DIMENSIONS ARE IN QUESTION, REQUEST CLARIFICATION FROM ARCHITECT BEFORE PROCEEDING.
- D. ALL GYPSUM BOARD WALLS AND CEILINGS IN WORK AREA TO BE PAINTED.
- E. CONTRACTOR TO PROVIDE AND INSTALL ALL KITCHEN EQUIPMENT.

**KEYED NOTES**

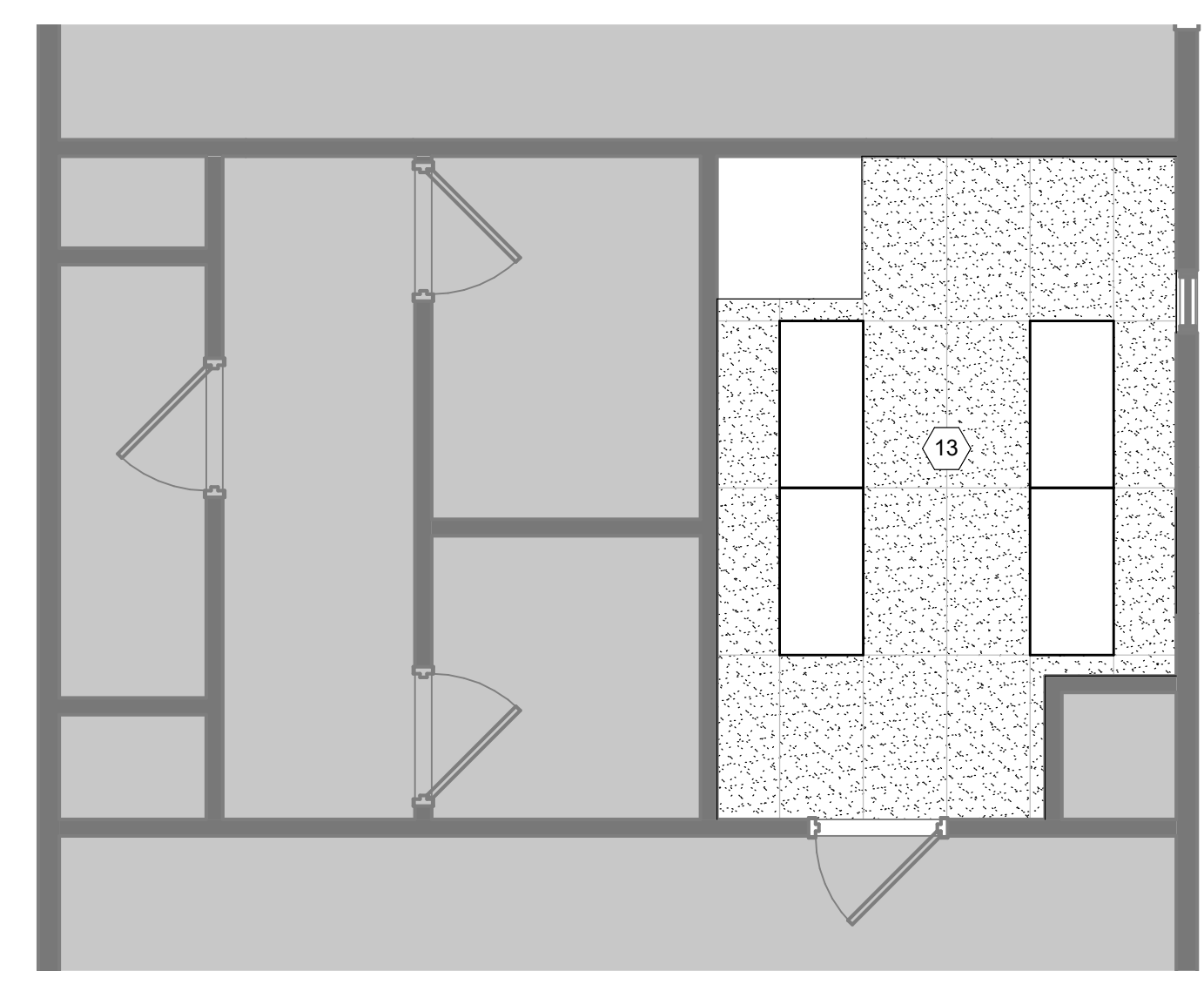
- 1. DEMO EXISTING COUNTER AND CASEWORK
- 2. EXISTING EQUIPMENT TO BE REMOVED BY OWNER
- 3. DEMO EXISTING WALL
- 4. DEMO EXISTING FLOORING AND BASE
- 5. DEMO PORTION OF WALL FOR NEW OPENING
- 6. REMOVE EXISTING IN COUNTER SINK
- 7. EXISTING OVEN/RANGE AND HOOD TO REMAIN
- 8. STAINLESS STEEL WORK TABLE WITH UNDER COUNTER SHELF BY OWNER (30" X 48")
- 9. NEW 3 SECTION DUAL REFRIGERATOR AND FREEZER, BASIS OF DESIGN: Beverage-Air HBRF72HC-1-B Hydrocarbon Series
- 10. EXISTING UNDER COUNTER DISHWASHER TO REMAIN
- 11. OPEN WIRE SHELVING
- 12. STAINLESS STEEL SHELVES BY OWNER
- 13. NEW 2X4 SUSPENDED LAY IN SCRUBBABLE CEILING
- 14. DEMO EXISTING CEILING
- 15. NEW FLOORING AND WALL BASE: 6 X 6 QUARRY TRACTION MATTE, SEAL EXISTING WOOD SUB FLOOR TO PREVENT MOISTURE ABSORBING INTO THE GROUT; USE URETHANE GROUT OR SYNTHETIC PRE-MIXED GROUT LIKE FUSION PRO
- 16. METAL SLOPE TRANSITION BETWEEN QUARRY TILE AND EXISTING CARPET: SCHLUTER RENO-RAMP
- 17. INSTALL STAINLESS STEEL FLOOR TO CEILING THIS WALL.
- 18. INSTALL FRP PANEL FROM FINISH FLOOR TO 5'-0" AFF.

**LEGEND**

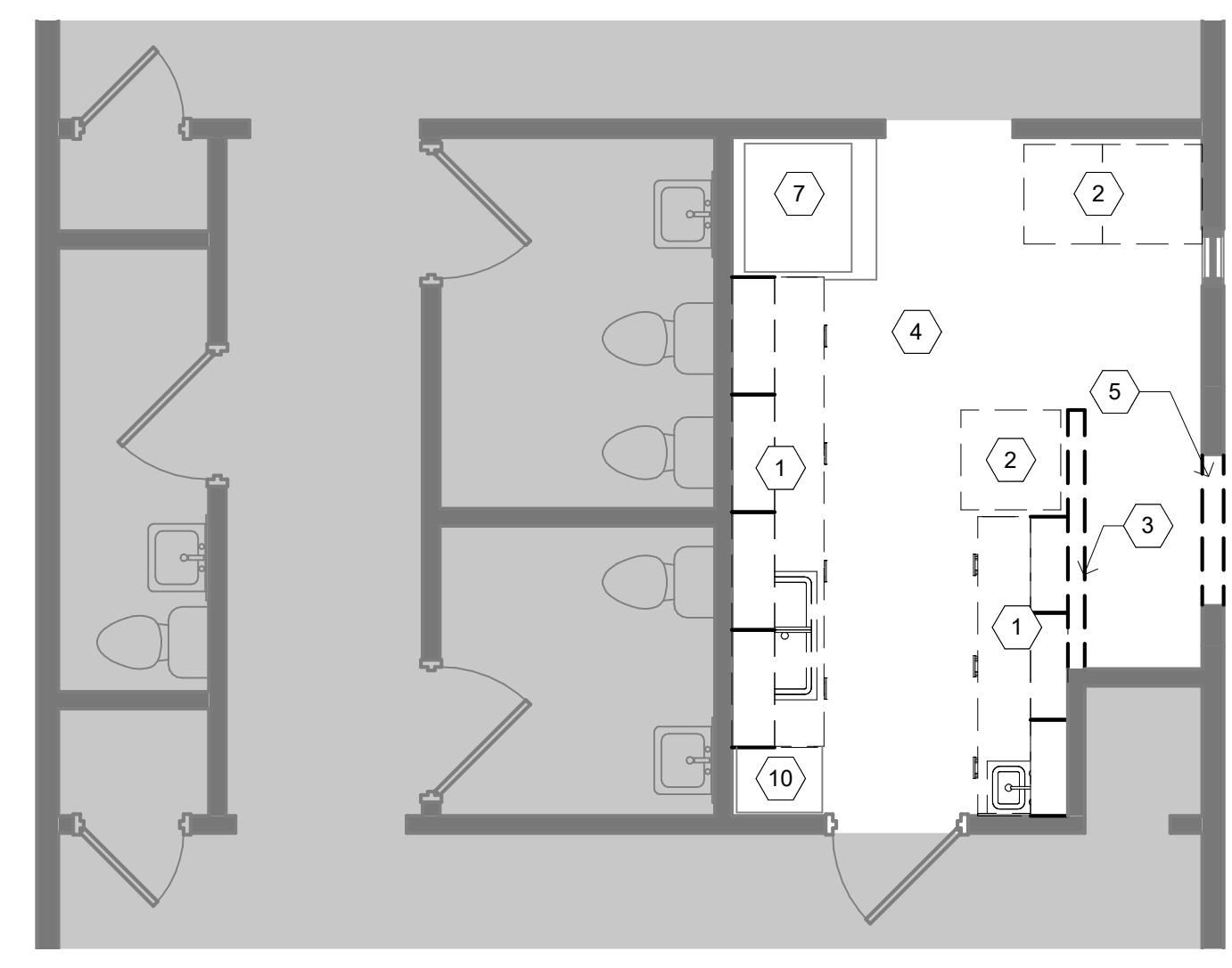
- 2X4 SCRUBBABLE LAY IN CEILING SYSTEM: ROCKFON HYGENIC PLUS OR EQUAL
- 2X4 LED LIGHT FIXTURE; RE: ELECTRICAL



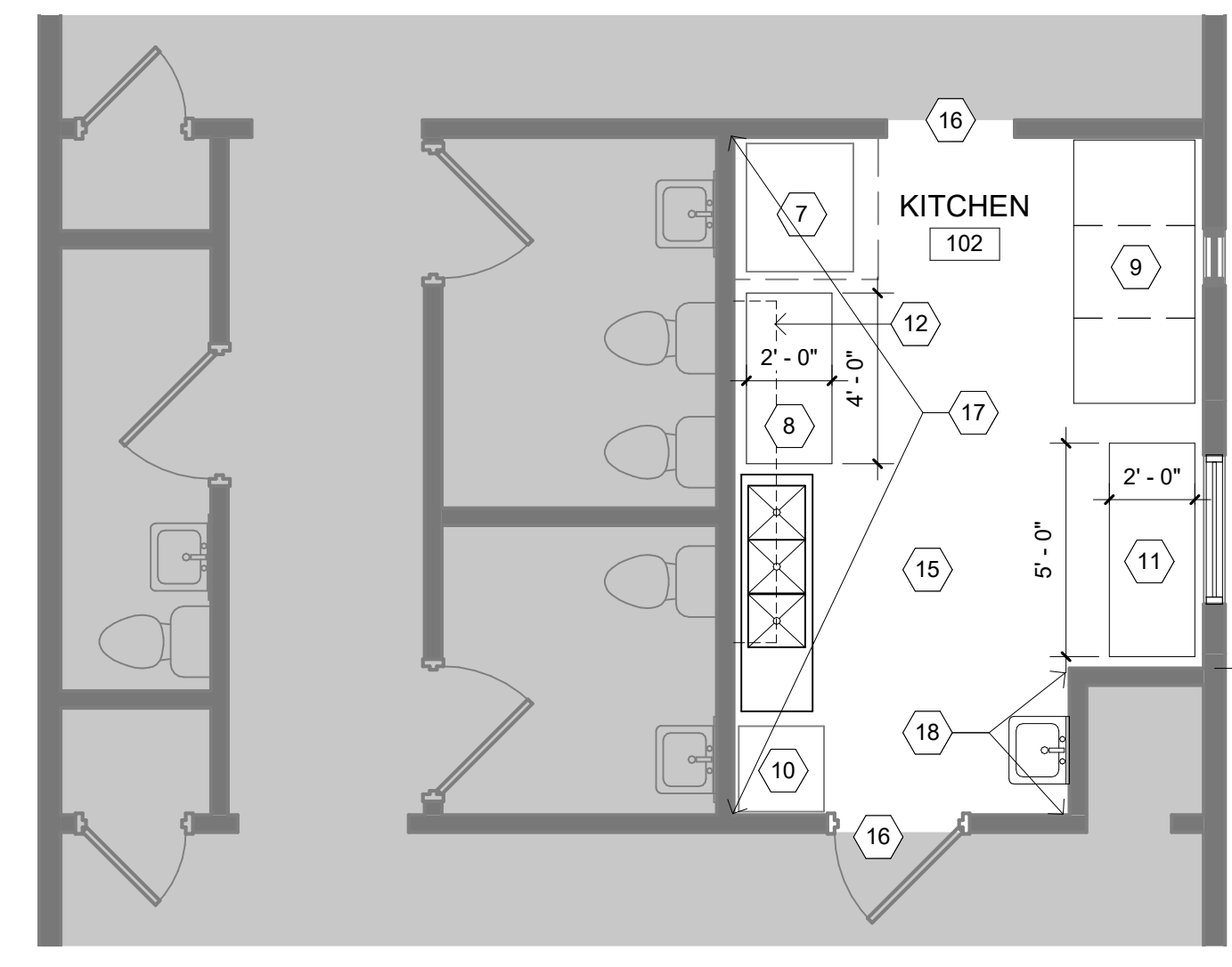
**C3** LEVEL 1 RCP  
1/4" = 1'-0"



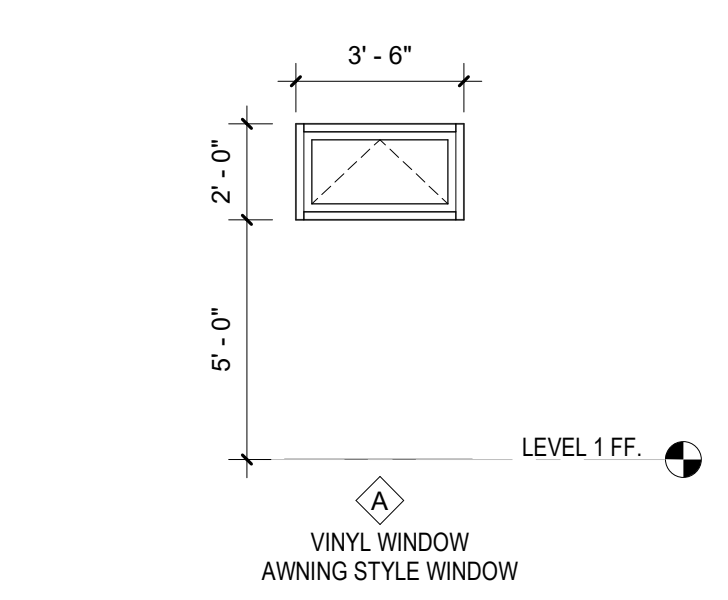
**C4** LEVEL 1 RCP  
1/4" = 1'-0"



**A3** DEMOLITION FLOOR PLAN  
1/4" = 1'-0"



**A4** FLOOR PLAN  
1/4" = 1'-0"



**A5** TYPE A WINDOW  
1/4" = 1'-0"

**PMS ESTANCIA HEAD START - KITCHEN REMODEL**  
 600 10TH STREET  
 ESTANCIA, NM 87016

100% PERMIT DRAWINGS

REVISION \_\_\_\_\_ DATE \_\_\_\_\_

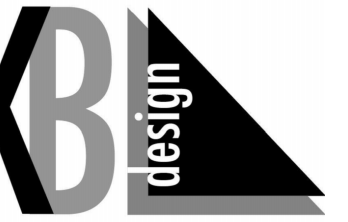
DATE 8/12/25

PROJECT NO. \_\_\_\_\_

**FLOOR PLAN - DEMO + NEW**

SHEET NO. \_\_\_\_\_

**A100**



kyleb@swcp.com  
505-850-8092

ARCHITECT/ ENGINEER



27 February 2026

PMS ESTANCIA HEAD START -  
KITCHEN REMODEL  
600 10TH STREET  
ESTANCIA, NM 87016

MECHANICAL/PLUMBING LEGEND		
SYMBOL	DESCRIPTION	PIPING SYMBOLS
<b>DUCTWORK SYMBOLS</b>		
	SECTION THROUGH RECTANGULAR SUPPLY DUCT	FLOW IN DIRECTION OF ARROW
	SECTION THROUGH RECTANGULAR EXHAUST OR RETURN DUCT	PITCH DOWN IN DIRECTION OF ARROW
	SECTION THROUGH ROUND DUCT, SUPPLY OR EXHAUST AS NOTED	VALVE IN RISE OF PIPE (TYPE AS SPECIFIED OR NOTED)
	CEILING SUPPLY AIR DIFFUSER	RISER DOWN (ELBOW)
	RETURN AIR GRILLE OR EXHAUST REGISTER	RISER UP (ELBOW)
	SIDEWALL SUPPLY REGISTER	RISE OR DROP
	FLEXIBLE DUCT, SIZE AS SHOWN	BRANCH - TOP CONNECTION
	HAND (VOLUME) DAMPER IN DUCT	BRANCH - BOTTOM CONNECTION
	RECTANGULAR-TO-ROUND TRANSITION	VALVE IN RISE
	VERTICAL FIRE DAMPER IN DUCT AT FIRE PARTITION	GATE VALVE
	HORIZONTAL FIRE DAMPER AT FLOOR PENETRATION	BUTTERFLY VALVE
	ACCESS DOOR	BALL VALVE
	KEYED NOTE	CHECK VALVE
<b>CONTROLS SYMBOLS</b>		
	THERMOSTAT	2-WAY CONTROL VALVE
	DAMPER MOTOR	3-WAY CONTROL VALVE
	IONIZATION SMOKE DETECTOR	CONCENTRIC REDUCER
	FREEZE/ESTAT	FLEXIBLE CONNECTION
	TEMPERATURE SENSOR	FLEXIBLE CONNECTION
	HUMIDITY SENSOR	FLANGE CONNECTION
	DEW POINT SENSOR	PRESSURE REDUCING VALVE (PRV)
	STATIC PRESSURE SENSOR	SOLENOID VALVE
	FLOW SWITCH	BALANCING VALVE
<b>PIPING SYMBOLS</b>		
	EXISTING PIPING	UNION
	DOMESTIC COLD WATER	STRAINER
	DOMESTIC HOT WATER	PRESSURE GAUGE
	DOMESTIC HOT WATER RECIRCULATION	AIR VENT
	SANITARY WASTE	T&P RELIEF VALVE
	SANITARY VENT	THERMOMETER
	GREASE WASTE	WALL HYDRANT
	DRAIN (CONDENSATE OR RELIEF)	DEMOLITION
	STORM DRAIN	BALANCING VALVE WITH PRESSURE PORTS (CIRCUIT SETTER)
	STORM DRAIN OVERFLOW	POINT OF DISCONNECTION
	NATURAL GAS	POINT OF RECONNECTION
	MEDIUM PRESSURE NATURAL GAS	WASTE CLEAN-OUT
	FIRE PROTECTION	

MECHANICAL/PLUMBING ABBREVIATIONS			
ABBREVIATION	DEFINITION	ABBREVIATION	DEFINITION
AFF	ABOVE FINISHED FLOOR	LAT	LEAVING AIR TEMPERATURE
AFG	ABOVE FINISHED GRADE	LDBT	LEAVING DRY BULB TEMPERATURE
AHJ	AUTHORITY HAVING JURISDICTION	LWBT	LEAVING WET BULB TEMPERATURE
ARCH	ARCHITECT	LWT	LEAVING WATER TEMPERATURE
CFH	CUBIC FEET PER HOUR	MAT	MIXED AIR TEMPERATURE
CFM	CUBIC FEET PER MINUTE	MBH	THOUSAND BTU PER HOUR
CLG	CEILING	MCA	MINIMUM CIRCUIT AMPACITY
CO	CARBON MONOXIDE	MISC	MISCELLANEOUS
CO	CLEANOUT	MOCPP	MAXIMUM OVERCURRENT PROTECTION
COTG	CLEANOUT TO GRADE	NC	NOISE CRITERIA
CO2	CARBON DIOXIDE	NEC	NATIONAL ELECTRICAL CODE
CU	CONDENSING UNIT	NFPA	NATIONAL FIRE PROTECTION ASSOCIATION
CW	COLD WATER	NTS	NOT TO SCALE
DB	DRY BULB	OA	OUTSIDE AIR
DDC	DIRECT DIGITAL CONTROLS	OFD	OVERFLOW DRAIN
DEG F	DEGREES FAHRENHEIT	PPM	PARTS PER MILLION
DWH	DOMESTIC WATER HEATER	PRV	PRESSURE REDUCING VALVE
EDBT	ENTERING DRY BULB TEMPERATURE	PSI	POUNDS PER SQUARE INCH
EF	EXHAUST FAN	RA	RETURN AIR
EL	ELEVATION	RAT	RETURN AIR TEMPERATURE
ETC	ET CETERA	RD	ROOF DRAIN
EWBT	ENTERING WET BULB TEMPERATURE	RH	RELATIVE HUMIDITY
EWT	ENTERING WATER TEMPERATURE	RM	ROOM
FCO	FLOOR CLEAN-OUT	RPM	REVOLUTIONS PER MINUTE
FD	FLOOR DRAIN	RTU	ROOF TOP UNIT
FDC	FIRE DEPARTMENT CONNECTION	SA	SUPPLY AIR
FH	FIRE HYDRANT	SD	STORM DRAIN
FPM	FEET PER MINUTE	SF	SQUARE FOOT
FS	FLOOR SINK	SS	SANITARY SEWER
GAS	NATURAL GAS	SUB	SUBSTITUTE
GC	GENERAL CONTRACTOR	TSTAT	THERMOSTAT
GPM	GALLONS PER MINUTE	TYP	TYPICAL
GT	GREASE TRAP	UNO	UNLESS NOTED OTHERWISE
HB	HOSE BIB	UR	URINAL
HD	HEAVY DUTY	V	VENT
HT	HEIGHT	W/	WITH
HW	HOT WATER	W/O	WITHOUT
HWR	HOT WATER RETURN	WB	WET BULB
HWS	HOT WATER SUPPLY	WC	WATER CLOSET
IBC	INTERNATIONAL BUILDING CODE	WCO	WALL CLEAN-OUT
J-BOX	JUNCTION BOX	WHA	WATER HAMMER ARRESTOR

PIPING MATERIALS	
DOMESTIC HOT AND COLD WATER PIPING: TYPE K HARD COPPER TUBE, WROUGHT COPPER FITTINGS, NO LEAD SOLDER, BRONZE BALL VALVES	PEX TUBING, METAL INSERT AND COPPER CLAMP RING OR ASSE 1061 PUSH-FIT FITTINGS, BRONZE BALL VALVES.
SOIL, WASTE, AND VENT PIPING: BELOW GRADE -- STANDARD WEIGHT C.I. NO HUB WITH HEAVY DUTY CLAMPS OR SCH 40 PVC WITH SOCKET TYPE FITTINGS ABOVE GRADE -- STANDARD WEIGHT C.I., NO HUB WITH STANDARD CLAMPS. PVC VENT PIPE IN NON-PLENUM SPACES	NATURAL GAS PIPING: SCH 40 BLACK STEEL PIPE, MALLEABLE IRON FITTINGS, NON-LUBRICATED BALL VALVES WITH RESILIENT SEATS. AGA AND UL LISTED FOR GAS SERVICE
WATER HAMMER ARRESTORS: INSTALL WATER HAMMER ARRESTORS AT ALL QUICK-CLOSING VALVES. REFER TO PDI-200 FOR INSTALLATION SIZING AND LOCATIONS. PISTON TYPE ARRESTOR ONLY. SOUIX CHIEF 'HYDRARRESTER' OR EQUAL. NO BELLOWS TYPE. PROVIDE WITH ISOLATION VALVE	

DUCT MATERIAL	
ALL DUCTWORK DIMENSIONS ARE INSIDE FREE AREA DIMENSIONS.  DUCTWORK: G60 GALVANIZED SHEET STEEL: LOCK FORMING QUALITY; CONSTRUCTED TO THE LATEST EDITION OF SMACNA "HVAC DUCT CONSTRUCTION STANDARDS"; "-1" W.C. PRESSURE CLASSIFICATION, SEAL CLASS "C"; WITH GALVANIZED STEEL FASTENERS, ANCHORS, ANGLES, STRAPS, ETC.  ROUND DUCT: SPIRAL SEAM, GALVANIZED STEEL. DIE STAMPED OR 5 GORE ELBOWS.  SEAL ALL SEAMS (LONGITUDINAL AND TRANSVERSE) AIRTIGHT WITH UNITED MCGILL "UNI-GRIP" UL LISTED, WATER BASED, NON-HARDENING, ELASTIC SEALANT OR EQUIVALENT. TAPE NOT ALLOWED.  FLEXIBLE DUCTWORK: UL LISTED AND LABELED, CLASS 1 AIR DUCT. WORKING PRESSURE RATING: POS. 6", NEG. 4". FLEXMASTER TYPE 5 OR EQUIVALENT. 5 FEET MAX LENGTH.	

### GENERAL MECHANICAL AND PLUMBING NOTES:

- ALL WORK SHALL BE ACCOMPLISHED IN STRICT ACCORDANCE WITH MANUFACTURER'S REQUIREMENTS TO PREVENT VOIDING OF WARRANTY. REFER TO EXISTING ROOF WARRANTY WHEN PERFORMING WORK ON ROOF AND FOLLOW WARRANTY REQUIREMENTS.
- SEE ARCHITECTURAL REFLECTED CEILING PLAN FOR ALL CEILING PENETRATIONS AND AIR DEVICE LOCATIONS. VERIFY CEILING TYPES BEFORE ORDERING AIR DEVICES. IN HARD CEILINGS AND WALLS, PROVIDE ACCESS PANELS TO FULLY ACCESS AND SERVICE ALL ISOLATION VALVES, FIRE/SMOKE DAMPERS, BALANCING DAMPERS, CONTROL DEVICES, AND ALL OTHER DEVICES THAT REQUIRE MAINTENANCE.
- PROVIDE SOUND ELBOW FOR ALL CEILING RETURN/TRANSFER AIR GRILLES AS SHOWN IN DETAIL SHEET, UNLESS SHOWN WITH A DIFFERENT DUCT CONFIGURATION. USE NO MORE THAN 5 FT OF FLEXIBLE DUCT LENGTHS. ALL OTHER DUCTWORK SHALL BE RIGID METAL, PER SPECIFICATIONS. SEE DUCT CONSTRUCTION SCHEDULE AND SPECIFICATIONS FOR SPECIFIC AND GENERAL MATERIALS AND REQUIREMENTS. ALL RECTANGULAR SQUARE ELBOWS SHALL BE PROVIDED WITH INTERNAL TURNING VANES. INSTALL FLEXIBLE DUCT CONNECTIONS BETWEEN DUCTWORK AND ANY EQUIPMENT CONTAINING A MOTOR (NO EXCEPTIONS). DUCT DIMENSIONS ARE INSIDE DIMENSIONS. INCREASE SIZE OF DUCTS IF ACOUSTIC LINING IS SCHEDULED OR SPECIFIED. DO NOT INSTALL THERMOSTATS ON EXTERIOR WALLS.
- ALL MATERIALS ON PLANS ARE NEW, UNLESS INDICATED OTHERWISE. OWNER HAS FIRST RIGHT OF REFUSAL OF ANY AND ALL EQUIPMENT AND MATERIALS. ANY EQUIPMENT OR MATERIAL REQUIRING SERVICE SHALL BE INSTALLED 10FT FROM EDGE OF ROOF OR PARAPETS.
- SUPPORT ALL PIPING, DUCTS, EQUIPMENT ON ROOF USING FLASHED AND COUNTER FLASHED CURB. LENGTH OF CURB SHALL REACH ALL STRUCTURAL MEMBERS UNDER UNIT PLUS ONE ON EACH SIDE. REPAIR DISTURBED AREAS TO A LIKE CONDITION.
- DRAWINGS ARE CONSIDERED SCHEMATIC IN NATURE. PROVIDE REQUIRED FITTINGS AND OFFSETS FOR A COMPLETELY OPERATIONAL INSTALLATION. EQUIVALENT DUCT MAY BE SUBSTITUTED IN ACCORDANCE TO SMACNA, PRIOR APPROVAL IS REQUIRED FROM OWNER INSTALLATION. ALL DUCTWORK SHALL BE CONSTRUCTED TO MEET SMACNA STANDARDS.
- ALL BACKDRAFT DAMPERS SHALL BE COUNTERBALANCED TYPE WITH ADJUSTABLE WEIGHTS AND VINYL SEALS, UNLESS NOTED, SIMILAR TO NAILOR 1370CB. MINIMUM DAMPER PERFORMANCE SHALL INCLUDE A BLADE REACTION AT 0.01" W.G. AND A MAXIMUM LEAKAGE OF 15 CFM/SF AT 1" W.G. MOTORIZED OUTDOOR AIR DAMPERS SHALL BE RATED AT 4 CFM/SF AT 1.0" W.G. WHEN TESTED IN ACCORDANCE TO AMCA. MANUFACTURER'S INSTALLATION INSTRUCTIONS MUST BE AVAILABLE AT THE JOB SITE FOR ALL FIRE AND SMOKE DAMPERS AT THE TIME OF ROUGH-IN INSPECTION.
- ALL MATERIAL ABOVE THE CEILING WHERE THIS SPACE IS USED AS A RETURN AIR PLENUM MUST BE NON-COMBUSTIBLE, ALL LOW VOLTAGE/ COMMUNICATIONS CABLE MUST BE PLENUM RATED AND ALL ELECTRICAL WIRING MUST BE IN A PLENUM RATED SHEATH OR CONDUIT.
- ALL PIPING SHALL BE ADEQUATELY SUPPORTED FROM THE BUILDING STRUCTURE TO PREVENT SAGGING, POCKETING, SWAYING OR DISPLACEMENT BY MEANS OF HANGERS AND SUPPORTS. PIPING IS NOT TO BE SUPPORTED BY EQUIPMENT. PROVIDE DIELECTRIC UNIONS BETWEEN DISSIMILAR MATERIALS. PROVIDE MANUAL AIR VENTS AND CAPPED HOSE-END DRAINS WITH ISOLATION VALVE AT PIPING HIGH AND LOW POINTS. WELD PIPE IN ACCORDANCE WITH APPLICABLE CODES AND STANDARDS. WELDERS SHALL BE CERTIFIED FOR TYPE OF WELD BEING PERFORMED. FLUSH OUT PIPING AND REMOVE CONTROL DEVICES BEFORE PERFORMING PRESSURE TEST. DO NOT USE PIPING SYSTEM VALVES TO ISOLATE SECTIONS WHERE TEST PRESSURE EXCEEDS VALVE PRESSURE RATING. PRESSURIZE PIPING AT 100 PSIG. IF LEAKAGE IS OBSERVED OR IF TEMPERATURE COMPENSATED PRESSURE DROP EXCEEDS 1% OF TEST PRESSURE, REPAIR LEAKS AND RETEST. DO NOT USE AIR PRESSURE TO TEST PLASTIC PIPE, PROVIDE SUPPORT UNDER ELBOWS ON PUMP SUCTION AND DISCHARGE LINES.
- AFTER INSTALLATION OF SYSTEM, PERFORM AN OPERATIONAL TEST IN THE PRESENCE OF THE OWNER, ARCHITECT, OR ENGINEER. THIS TEST WILL CONSIST OF SUCCESSFULLY DEMONSTRATING APPEARANCE OF INSTALLATION, FUNCTION OF ALL CONTROLS, THE CONTROLS SHALL BE OPERATED IN THE FOLLOWING MODES IN EACH ZONE: OCCUPIED/UNOCCUPIED. IF THE TEST IS NOT SUCCESSFUL IN THE OPINION OF THE ARCHITECT OR ENGINEER, DEFICIENCIES WILL BE REMEDIATED AND THE SYSTEM WILL BE RE-TESTED UNTIL THE TEST IS SUCCESSFUL.
- WHERE NEW MECHANICAL SYSTEMS ARE USED FOR TEMPORARY VENTILATION OR CLIMATE CONTROL, MECHANICAL EQUIPMENT INSTALLER SHALL BE PROVIDE CONSTRUCTION FILTERS, MAINTAIN EQUIPMENT, AND CLEAN, ADJUST AND PUT IN NEW CONDITION BEFORE BUILDING OCCUPANCY. PARTS AND LABOR WARRANTY SHALL NOT BE CONSIDERED TO START UNTIL ACCEPTANCE OF THE SYSTEM BY OWNER.

SUBMITTAL REQUIREMENTS	
SUBMIT ALL MECHANICAL AND PLUMBING SHOP DRAWING AND PRODUCT DATA AT ONE TIME. SUBMITTAL SHALL BE BOUND AND INDEXED IN A NEAT AND ORDERLY MANNER. PARTIAL SUBMITTALS WILL BE REJECTED.	
SUBMITTALS SHALL INCLUDE, BUT NOT BE LIMITED TO: EQUIPMENT, FIXTURES, INSULATION, DIFFUSERS, PIPING, VALVES, CONTROLS, AND FIRE PROTECTION.	

PROJECT SCOPE:	
Kitchen remodel in existing building. Installation of new HVAC and plumbing.	
PROJECT CODES:	
<ul style="list-style-type: none"> <li>2021 UNIFORM PLUMBING CODE</li> <li>2021 UNIFORM MECHANICAL CODE</li> <li>2021 INTERNATIONAL ENERGY CONSERVATION CODE</li> </ul>	

MINIMUM PIPE INSULATION		
BASED ON: INTERNATIONAL ENERGY CONSERVATION CODE 2021, SECTIONS C404.4 AND C404.5		
PIPING FROM A WATER HEATER TO THE TERMINATION OF THE HEATED WASTER SUPPLY PIPE SHALL BE INSULATED AS PER THE TABLE BELOW. INSULATION SHALL HAVE A CONDUCTIVITY NOT EXCEEDING 0.27 BTU PER INCH/HRxFT 2x°F (R-3 min.). THE FIRST 8' OF BOTH INLET AND OUTLET PIPING OF A WATER HEATER SHALL BE INSULATED WITH 1" OF MATERIAL HAVING A CONDUCTIVITY NOT EXCEEDING 0.27 BTU PER INCH/HRxFT 2x°F.		
ALL INSULATION TO HAVE FACTORY APPLIED ASJ COMPLYING WITH ASTM C 1136, TYPE I.		
MINIMUM PIPE INSULATION <sup>a</sup>		
BASED ON: INTERNATIONAL ENERGY CONSERVATION CODE 2021, SECTION C403.12.3 AND UPC 609.12		
	NOMINAL PIPE DIAMETER	
FLUID	<1.5"	>1.5"
HEATING WATER	1.5"	2.0"
DOMESTIC HOT WATER	EQUAL TO PIPE DIAMETER, (1" MINIMUM)	EQUAL TO PIPE DIAMETER
DOMESTIC COLD WATER <sup>b</sup>	0.5"	1.0"
CHILLED WATER, BRINE OR REFRIGERANT	1.0"	1.5"

SEISMIC RESTRAINT FOR WATER HEATERS.	
BASED ON: UNIFORM PLUMBING CODE SECTION 507.2	
IN SEISMIC DESIGN CATEGORIES C,D,E, AND F, WATER HEATERS SHALL BE ANCHORED OR STRAPPED TO RESIST HORIZONTAL DISPLACEMENT DUE TO EARTHQUAKE MOTION. STRAPPING SHALL BE AT POINTS WITHIN THE UPPER ONE-THIRD AND LOWER ONE-THIRD OF ITS VERTICAL DIMENSIONS. AT THE LOWER POINT, A DISTANCE OF NOT LESS THAN 4" SHALL BE MAINTAINED ABOVE THE CONTROLS WITH THE STRAPPING.	
TEMPERATURE AND HOT WATER SYSTEM CONTROLS	
BASED ON: IECC 2021 CODE SECTION C404.6	
AUTOMATIC-CIRCULATING HOT WATER SYSTEMS SHALL BE PROVIDED WITH A CIRCULATION PUMP. SYSTEM RETURN PIPING SHALL BE DEDICATED. CONTROLS SHALL AUTOMATICALLY TURN OFF THE PUMP WHEN WATER IN THE CIRCULATION LOOP IS AT THE DESIRED TEMPERATURE AND WHEN THERE IS NOT A DEMAND FOR HOT WATER.	
ALL PIPE DISTANCES BETWEEN HOT WATER SUPPLY PIPING AND FIXTURES SHALL COMPLY WITH C404.5.	

MINIMUM DUCT INSULATION	
BASED ON: INTERNATIONAL ENERGY CONSERVATION CODE 2021, SECTION C403.12	
DUCT AND PLENUM INSULATION AND SEALING:  ALL SUPPLY AND RETURN DUCTS AND PLENUMS SHALL BE INSULATED WITH A MINIMUM OF R-6 INSULATION WHEN LOCATED IN UNCONDITIONED SPACES AND A MINIMUM OF R-8 INSULATION WHEN LOCATED OUTSIDE THE BUILDING. WHEN LOCATED WITHIN A BUILDING ENVELOPE ASSEMBLY, THE DUCT OR PLENUM SHALL BE SEPARATED FROM THE BUILDING EXTERIOR OR UNCONDITIONED OR EXEMPTED SPACES BY A MINIMUM OF R-8 INSULATION.	
INSULATION WITHIN DUCTS AND PLENUMS SHALL HAVE A FLAME SPREAD INDEX NOT TO EXCEED 25 AND A SMOKE DEVELOPMENT INDEX NOT TO EXCEED 50 PER 2021 UMC 602.2 AND 604.1	
EXCEPTIONS: 1. WHEN LOCATED WITHIN EQUIPMENT. 2. WHEN THE DESIGN TEMPERATURE DIFFERENCE BETWEEN THE INTERIOR AND EXTERIOR OF THE DUCT OR PLENUM DOES NOT EXCEED 15°F (8°C).	

- BASED ON INSULATION HAVING A CONDUCTIVITY (k) NOT EXCEEDING 0.27 BTU PER INCH /HRxFT 2x°F (R-3 MIN.)
- DOMESTIC COLD WATER AND ROOF DRAIN INSULATION BASED ON CONDENSATION CONTROL, NOT IECC REQUIREMENTS.

### PERMIT DRAWINGS

REVISION	DATE
DATE	02-27-26
PROJECT NO	-
MECHANICAL COVER AND NOTES	
SHEET NO.	

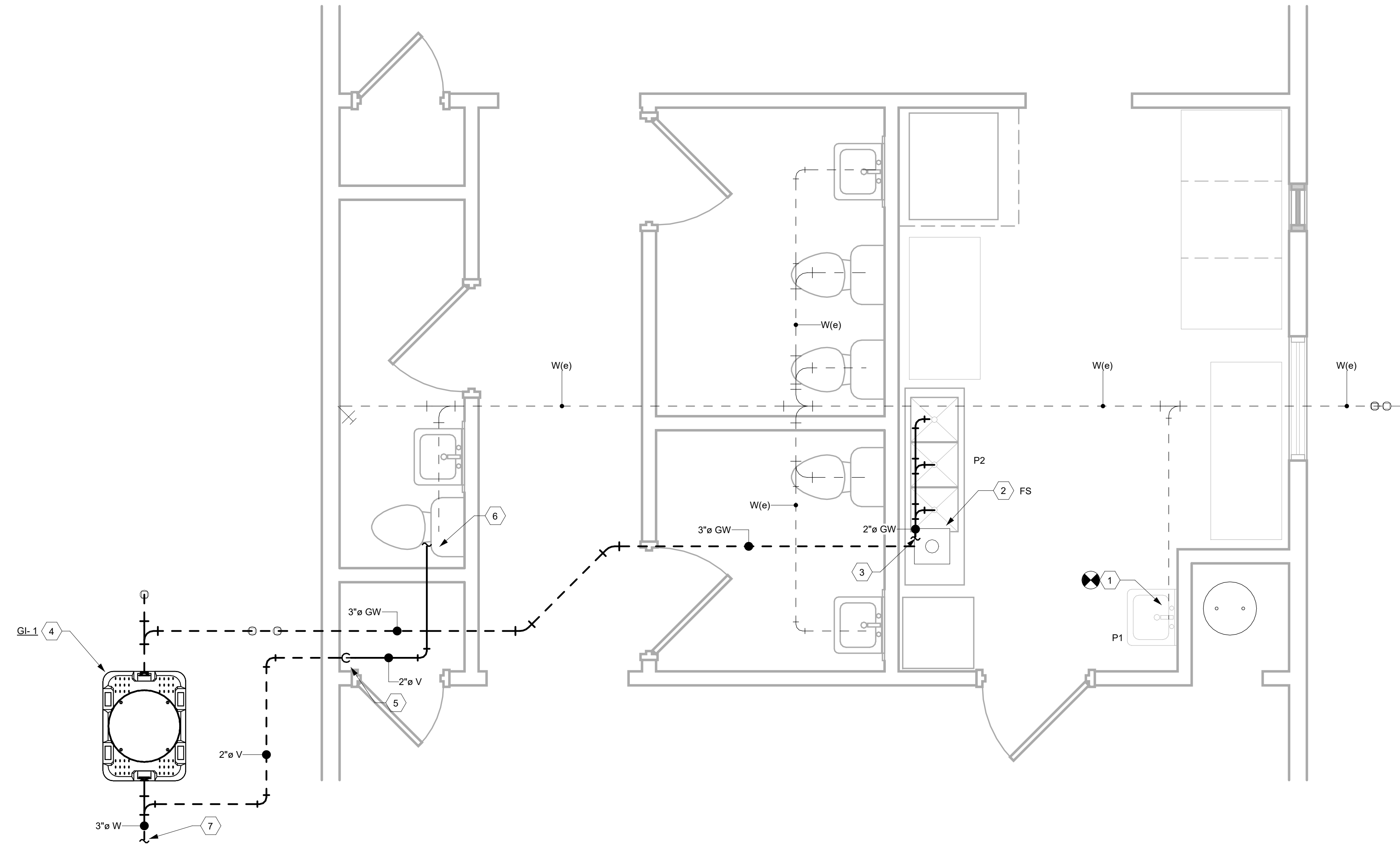
# PM-001

**GENERAL NOTES:**

- REFER TO PM-001 FOR GENERAL NOTES AND SYMBOLS.
- REFER TO P-101 FOR SCHEDULES.
- SUPPORT ALL PIPES WITH MSS SP-58 COMPONENTS. PROVIDE SADDLES AT ALL INSULATED PIPES.

**KEYED NOTES:**

- RECONNECT NEW SINK INTO EXISTING WASTE AND VENT PIPING.
- INSTALL NEW GREASE WASTE FLOOR SINK.
- ROUTE DRAIN FROM 3-COMPARTMENT SINK TO FLOOR SINK INDIRECT
- INSTALL NEW GREASE INTERCEPTOR ON SITE. FIELD COORDINATE EXACT LOCATION WITH EXISTING SIDEWALK AND LANDSCAPING.
- ROUTE VENT LINE FROM GREASE INTERCEPTOR TO WALL. RISE UP ON INSIDE SURFACE OF WALL TO CEILING.
- EXTEND VENT PIPE TO EXISTING VENT AND CONNECT.
- ROUTE DISCHARGE FROM GREASE INTERCEPTOR TO EXISTING SANITARY WASTE LINE ON SITE. FIELD COORDINATE EXACT ROUTING



**1 WASTE AND VENT PLAN**  
1/2" = 1'-0"

PLUMBING FIXTURE SCHEDULE											
SYMBOL	DESCRIPTION	ADA	MANUFACTURER AND MODEL	FAUCET MANUFACTURER AND MODEL NUMBER	ACCESSORIES	CONNECTIONS				REMARKS	FLOW RATE
						CW	HW	WASTE	VENT		
P1	HAND SINK	YES	ADVANCE TABCO 7-PS-EC-SP	INTEGRAL WITH BASIN	DRAIN PLUG, P-TRAP, ANGLE STOPS	1/2"	1/2"	2"	1-1/2"	STAINLESS STEEL HAND WASH SINK WITH GOOSE NECK FAUCET AND SIDE SPLASH	2.2 GPM
P2	3-POT SINK	NO	ADVANCE TABCO FC-3-1515-15L	KROWNE 18-725L	DRAIN PLUGS, OUTLET PIPES, MINI PRE-RINSE FAUCET ASSEMBLY	1/2"	1/2"	2"	-	3 COMPARTMENT SINK, 15"x15" BOWLS, 14" DEEP. PIPE WASTE INDIRECT TO GREASE INTERCEPTOR.	2.2 GPM
FS	FLOOR SINK	-	ZURN Z1902	-	TRAP-SEAL (JR SMITH 2692), INTERIOR DOME STRAINER, HALF GRATE.	-	-	3"	2"	FLOOR SINK WITH DOME STRAINER AND ELASTOMERIC TRAP SEAL. HALF GRATE FOR INDIRECT WASTE COLLECTION.	-

GREASE INTERCEPTOR SIZING			
FIXTURE	QUANTITY	DRAIN FIXTURE UNITS	TOTAL
FLOOR SINK	1	4	4
			4 DFU'S

NEW GREASE INTERCEPTOR:  
SCHIER GB-50, RATED AT 50 GPM INLET FLOW.  
PER 2021 UPC TABLE 703.2, 2" PIPE NEEDED FOR 4 DFU'S. PROVIDE 3" FOR MARGIN.  
PER 2021 UPC TABLE 1014.2.1, 3" PIPE TO A GREASE INTERCEPTOR AT 2 MINUTE FLOW HAS 35 GPM FLOW RATE.

GREASE INTERCEPTOR SCHEDULE				
SYMBOL	MANUFACTURER AND MODEL	TYPE	TANK VOLUME (GAL)	GREASE CAPACITY
GI-1	SCHIER GB-50	HYDRO-MECHANICAL	52	249 LBS.

- NOTES:  
1. HYDRO-MECHANICAL TYPE INTERCEPTOR. 249LB GREASE CAPACITY (35 GALLONS).  
2. PROVIDE RISER EXTENSION TO MATCH BURY DEPTH AND FINISHED GRADE. PROVIDE PEDESTRIAN RATED COVER.

**PERMIT DRAWINGS**

REVISION DATE

DATE 02-27-26

PROJECT NO -

**PLUMBING WASTE AND VENT**

SHEET NO.

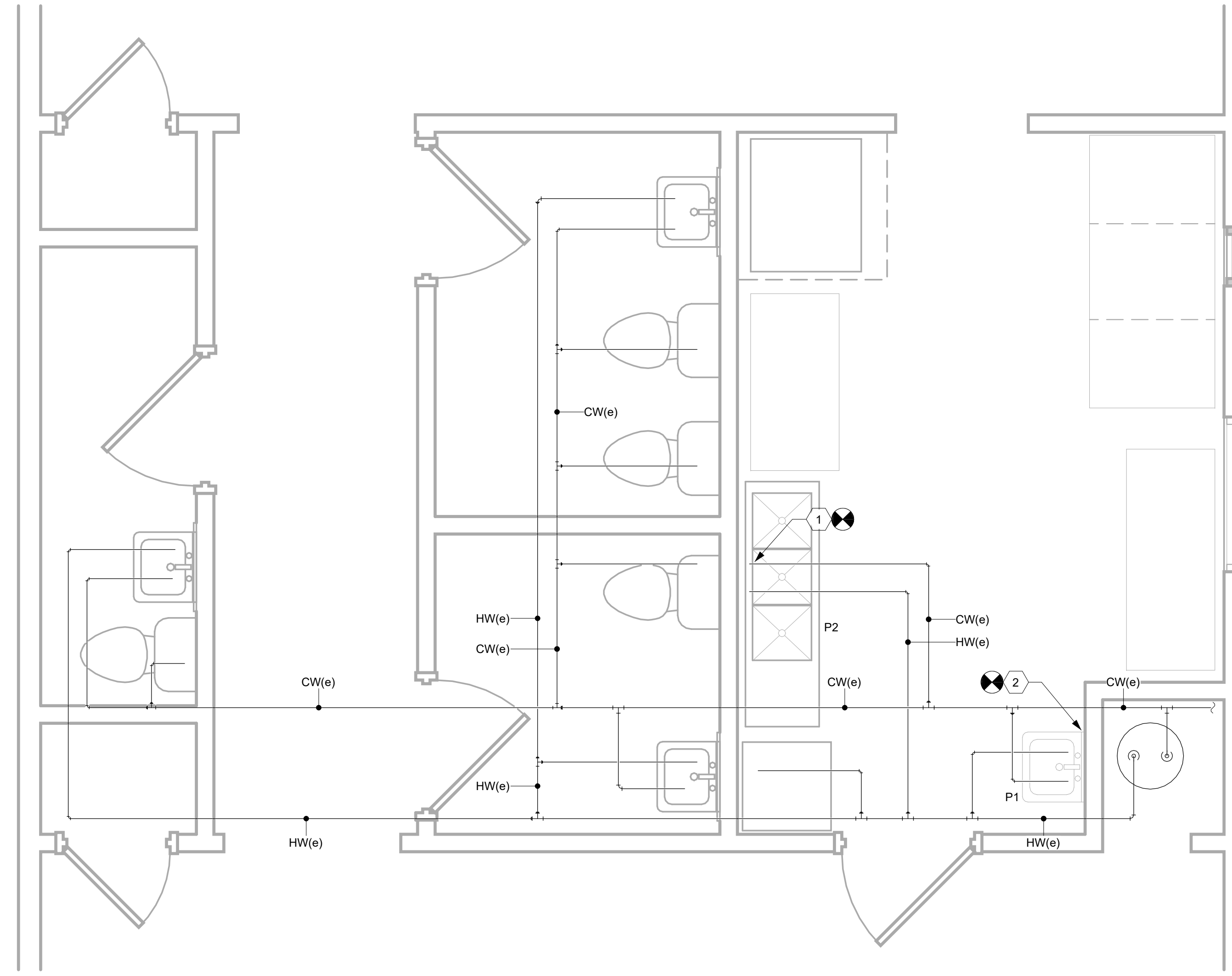
**P-101**

**GENERAL NOTES:**

1. REFER TO PM-001 FOR GENERAL NOTES AND SYMBOLS.
2. REFER TO P-101 FOR SCHEDULES.
3. SUPPORT ALL PIPES WITH MSS SP-58 COMPONENTS. PROVIDE SADDLES AT ALL INSULATED PIPES.

**KEYED NOTES:**

1. CONNECT NEW HAND SINK INTO EXISTING CW AND HW PIPES IN WALL.
2. CONNECT FAUCET FOR 3-COMPARTMENT SINK INTO EXISTING PIPES IN WALL. FIELD COORDINATE EXACT CONNECTION, AND ADJUST PIPE ROUTING TO MATCH NEW FAUCET LOCATION.



**1** WATER PLAN  
 1/2" = 1'-0"

**PMS ESTANCIA HEAD START -  
 KITCHEN REMODEL**  
 600 10TH STREET  
 ESTANCIA, NM 87016

**PERMIT  
 DRAWINGS**

REVISION	DATE

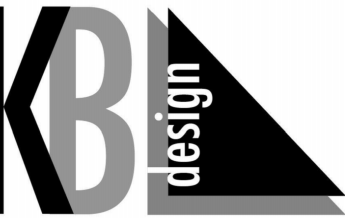
DATE 02-27-26

PROJECT NO -

PLUMBING WATER

SHEET NO.

**P-102**



kyleb@swcp.com  
505-850-8092

ARCHITECT/ ENGINEER



**PMS ESTANCIA HEAD START -  
KITCHEN REMODEL**  
 600 10TH STREET  
 ESTANCIA, NM 87016

**GENERAL NOTES:**

- REFER TO PM-001 FOR GENERAL NOTES AND SYMBOLS.
- REFER TO M-101 FOR EQUIPMENT SCHEDULES.

**KEYED NOTES:**

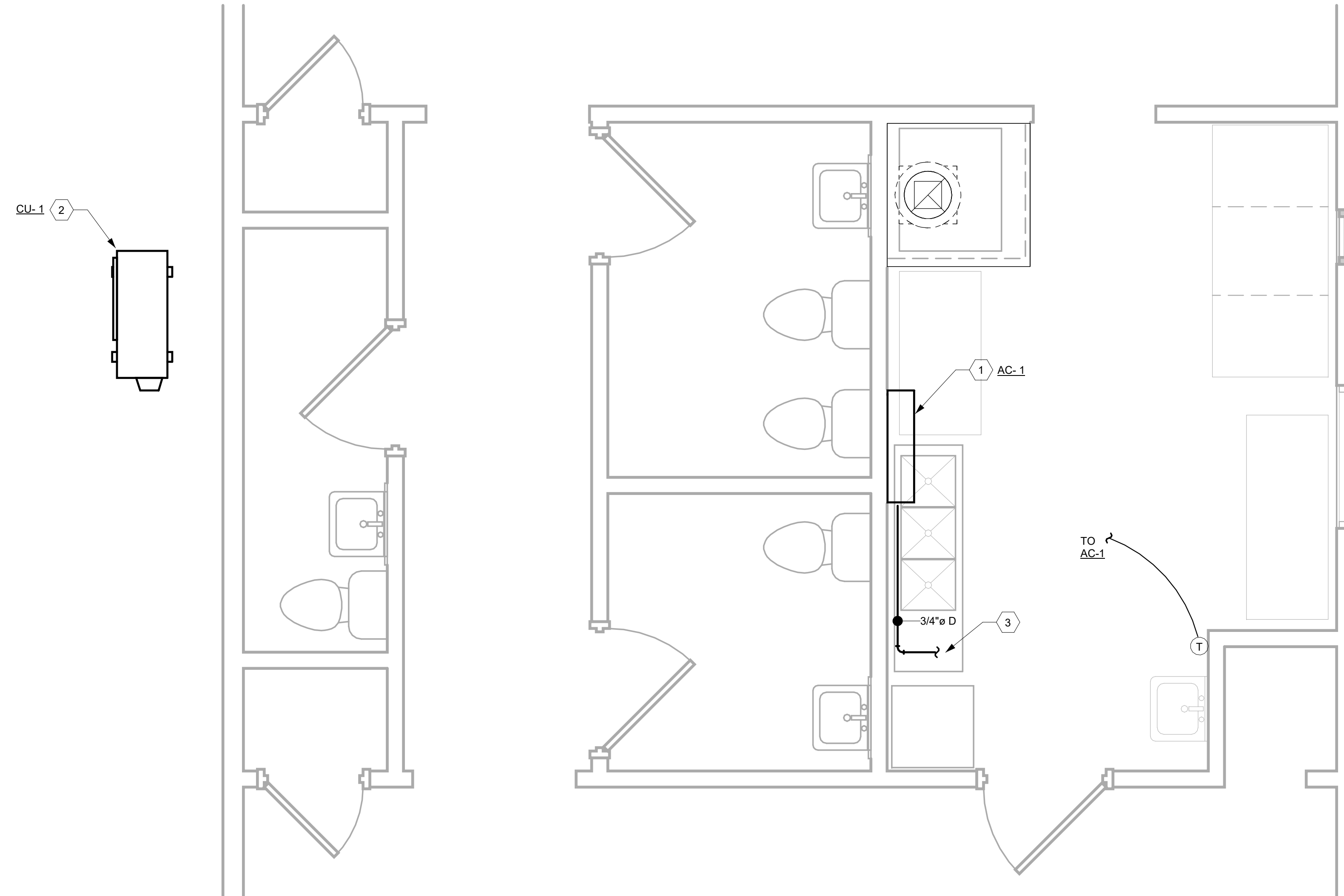
- NEW MINI-SPLIT HEAT-PUMP UNIT MOUNTED ON WALL. FIELD COORDINATE EXACT LOCATION WITH CASEWORK AND WALL ACCESSORIES. ROUTE REFRIGERANT AND POWER LINES BETWEEN INDOOR AND OUTDOOR UNITS PER MFG.
- NEW DX CONDENSING UNIT ON CONCRETE PAD. FIELD COORDINATE EXACT LOCATION WITH EXISTING SIDEWALK AND LANDSCAPING
- ROUTE CONDENSATE TO FLOOR SINK INDIRECT.

**VENTILATION SUPPLY:**

SPACE IS PROVIDED WITH VENTILATION AIR PER NATURAL VENTILATION, UMC 402.2.

**KITCHEN:**  
SINGLE SIDED OPENING, MAX DISTANCE FROM OPENING IS 2H. CEILING HEIGHT IS 8'. MAX DISTANCE IS 16'.

FLOOR AREA IS 165 SQFT. 4% OF FLOOR AREA FOR OPERABLE OPENINGS, 6.6 SQFT.  
1 WINDOW, 3.5'x2' OPENING, FOR 7 SQFT. OF EXTERIOR OPENING.



**1 MECHANICAL FLOOR PLAN**  
1/2" = 1'-0"

HEAT PUMP FAN COIL SCHEDULE													
MARK	LOCATION	CFM	COOLING CAPACITY		HEATING CAPACITY		ELECTRICAL			FILTER	WEIGHT (LBS.)	MANUFACTURER AND MODEL	NOTES
			ENT. AIR DB/WB	TOTAL MBH	ENT. AIR DB	MBH OUT @ ALT.	VOLT / PH	MCA	MOCP				
AC-1	KITCHEN	328	80/62	12	64	12	BY OUTDOOR UNIT			1" T.A.	50	LENNOX MWH012	SEE NOTE 1-3

**NOTES:**

- FURNISH UNIT WITH HARD-WIRED MANUFACTURER'S 7-DAY PROGRAMMABLE CONTROLLER.
- PROVIDE CONDENSATE PUMP, RECTOR-SEAL ASPEN OR EQUAL; REFRIGERANT CONCEALMENT CHANNEL.
- ELECTRICAL FOR INDOOR UNITS SUPPLIED BY OUTDOOR UNIT.

OUTDOOR CONDENSING UNIT SCHEDULE												
MARK	O/A SUMMER TEMP °F	SERVICE	TOTAL COOLING CAPACITY (MBH)	COOLING EFF.	TOTAL HEATING CAPACITY (MBH) @10°F	HEATING EFF. (HSPF2)	ELECTRICAL			WEIGHT (LBS.)	MANUFACTURER AND MODEL	NOTES
							VOLT/PH	MCA	MOCP			
CU-1	95	KITCHEN	12	24 SEER2	12	9.0	208/1φ	12	20	150	LENNOX MWLD012	SEE NOTE 1-2

**NOTES:**

- SIZE AND INSTALL REFRIGERANT PIPING BETWEEN OUTDOOR UNIT AND ASSOCIATED INDOOR UNITS FOLLOWING MANUFACTURER'S REQUIREMENTS.
- MOUNT UNIT LEVEL ON CONCRETE PAD.

**PERMIT DRAWINGS**

REVISION DATE

DATE 02-27-26

PROJECT NO. -

**MECHANICAL FLOOR PLAN**

SHEET NO.

**M-101**

## ELECTRICAL LEGEND & ABBREVIATIONS

THIS IS A STANDARD LEGEND SHEET. SOME SYMBOLS MAY APPEAR ON THIS SHEET THAT ARE NOT USED ON THE DRAWINGS.

ABBREVIATIONS		GENERAL		WALL SWITCHES 48" ABOVE FINISHED FLOOR (TYP.)		LIGHTING FIXTURES	
<p>1PH SINGLE-PHASE 1P SINGLE POLE 1WAY ONE-WAY 2WAY TWO-WAY 3PH THREE-PHASE 3P THREE POLE 3WAY THREE-WAY 4WAY FOUR-WAY</p> <p>AFF ABOVE FINISHED FLOOR AFG ABOVE FINISHED GRADE AHU AIR HANDLING UNIT AIC AMPERE INTERRUPTING CAPACITY AMP AMPERE ATS AUTO TRANSFER SWITCH AUX AUXILIARY AWG AMERICAN WIRE GAUGE</p> <p>BFF BELOW FINISHED FLOOR BFG BELOW FINISHED GRADE BRKR BREAKER</p> <p>C CONDUIT CB CIRCUIT BREAKER CCTV CLOSED CIRCUIT TELEVISION CF/CI CONTRACTOR FURNISHED/ CONTRACTOR INSTALLED</p> <p>CKT CIRCUIT CLG CEILING CT CURRENT TRANSFORMER CU COPPER</p> <p>(D) DEMOLITION DIA DIAMETER DIM DIMENSION DISC DISCONNECT DWG DRAWING</p> <p>(E) EXISTING EF EXHAUST FAN ELEC ELECTRIC ELEV ELEVATION EM EMERGENCY EMT ELECTRICAL METALLIC TUBING ENCL ENCLOSURE ENGR ENGINEER ENGY ENERGY ENT ELECTRICAL NONMETALLIC TUBING EPO EMERGENCY POWER OFF EPRF EXPLOSION PROOF EQ EQUAL EQ EQUIPMENT EXT EXTERIOR</p> <p>(F) FUTURE FA FIRE ALARM FACP FIRE ALARM CONTROL PANEL FC FOOTCANDLE FDR FEEDER FXT FUTURE FLA FULL LOAD AMPS FT FEET</p> <p>G GROUND GEN GENERATOR GFCI GROUND FAULT CIRCUIT INTERRUPTER GND GROUND</p> <p>HGT HEIGHT HP HORSEPOWER HPS HIGH PRESSURE SODIUM HV HIGH VOLTAGE HZ HERTZ (CYCLES PER SECOND)</p> <p>J-BOX JUNCTION BOX</p> <p>K THOUSANDS KVA KILOVOLT AMPERE KW KILOWATT</p>	<p>LED LIGHT EMITTING DIODE LTG LIGHTING LV LOW VOLTAGE</p> <p>MAN MANUAL MAX MAXIMUM MCB MAIN CIRCUIT BREAKER MCC MOTOR CONTROL CENTER MFR MANUFACTURER MIN MINIMUM MLO MAIN LUGS ONLY MTS MANUAL TRANSFER SWITCH MTR MOTOR MV MEDIUM VOLTAGE</p> <p>(N) NEW -N- NEUTRAL (GROUNDED CONDUCTOR) NEC NATIONAL ELECTRICAL CODE NEMA NATIONAL ELECTRICAL MANUFACTURERS ASSOCIATION NEUT NEUTRAL (GROUNDED CONDUCTOR) NFFA NATIONAL FIRE PROTECTION ASSOC. NIC NOT IN CONTRACT NTS NOT TO SCALE</p> <p>OF/CI OWNER FURNISHED/ CONTRACTOR INSTALLED OF/OI OWNER FURNISHED/ OWNER INSTALLED OVC OVERCURRENT OVRD OVERRIDE</p> <p>P POLE PA PUBLIC ADDRESS PEC PHOTOELECTRIC CELL PEND PENDANT PH PHASE PL PROPERTY LINE PNL PANEL/PANELBOARD PRI PRIMARY PT POTENTIAL TRANSFORMER PWR POWER</p> <p>QUAD QUADRUPLE RECEPTACLE OUTLET</p> <p>(R) RELOCATED (FINAL LOCATION) RCP REFLECTED CEILING PLAN REC RECESSED RECP RECEPTACLE REQD REQUIRED RNC RIGID NONMETALLIC CONDUIT</p> <p>SD SMOKE DETECTOR SEC SECONDARY SOW SCOPE OF WORK SPKR SPEAKER STOR STORAGE STRB STROBE STRB/HRN STROBE/HORN SW SWITCH SWBD SWITCHBOARD SYM SYMBOL</p> <p>TEL TELEPHONE TV TELEVISION TYP TYPICAL</p> <p>UG UNDERGROUND UL UNDERWRITERS LABORATORIES UP UTILITY POLE UPS UNINTERRUPTIBLE POWER SUPPLY UTIL UTILITY</p> <p>V VOLT VA VOLT AMPERE VD VOLTAGE DROP</p> <p>W WATT WP WEATHERPROOF WW WIREWAY</p> <p>XFMR TRANSFORMER</p>	<p>○ KEYED NOTE CALLOUTS</p> <p>--- MATCHLINE</p> <p style="text-align: center;"><b>ONE-LINE SYMBOLS</b></p> <p> TRANSFORMER</p> <p> GROUNDING ELECTRODE</p> <p> EQUIPMENT (CHASSIS) GROUND</p> <p> CIRCUIT BREAKER WITH: • TRIP AMPERE RATING • FRAME AMPERE RATING • NUMBER OF POLES</p> <p> DRAW OUT CIRCUIT BREAKER WITH: • FRAME SETTING • SENSOR SETTING • TRIP SETTING</p> <p> FUSED SWITCH WITH: • SWITCH/FUSES AMPERE RATINGS</p> <p> UTILITY COMPANY APPROVED SOCKET WITH METER INSTALLED</p> <p> GENERATOR</p> <p> MOTOR (NUMBER DENOTES HORSEPOWER)</p> <p> AUTOMATIC OR MANUAL TRANSFER SWITCH (AS LABELED)</p> <p style="text-align: center;"><b>RECEPTACLES 18" ABOVE FINISHED FLOOR (TYP.)</b></p> <p> WALL-MOUNTED DUPLEX • 'X' DENOTES PANEL NAME • 'YY' DENOTES CIRCUIT NUMBER</p> <p> CEILING-MOUNTED DUPLEX</p> <p> FLOOR-MOUNTED DUPLEX</p> <p> WALL-MOUNTED QUADRUPLE</p> <p> FLOOR-MOUNTED QUADRUPLE</p> <p> WALL-MOUNTED SIMPLEX</p> <p> SPECIAL PURPOSE</p> <p> DUPLEX AT SPECIAL HEIGHT, REFER TO ARCHITECTURAL DRAWINGS</p> <p> CONCEALED SERVICE FLOOR BOX WITH POWER AND SIGNAL DEVICES AS SHOWN</p> <p> 2X2 DIVIDED RACEWAY POWER POLE, CIRCUITED AS SHOWN, POWER ON ONE SIDE, TELECOM ON THE OTHER SIDE</p>	<p>1 SINGLE POLE 2 DOUBLE POLE 3 THREE-WAY O WALL SWITCH WITH OCCUPANCY SENSOR D WALL SWITCH WITH DIMMER a LOWERCASE LETTER (a) INDICATES SWITCH DESIGNATION</p> <p style="text-align: center;"><b>POWER DISTRIBUTION, EQUIPMENT, AND CONNECTIONS</b></p> <p> BRANCH CIRCUIT PANEL BOARD, SURFACE MOUNTED</p> <p> DISCONNECT SWITCH WITH AMPERE RATING</p> <p> FUSED DISCONNECT SWITCH WITH SWITCH/FUSES AMPERE RATINGS</p> <p> MOTOR CONNECTION, HP SIZE AS SHOWN</p> <p> MECHANICAL EQUIPMENT CONNECTION AND IDENTIFICATION</p> <p> FLEXIBLE CONNECTION TO EQUIPMENT</p> <p> TRANSFORMER</p> <p>--- EQUIPMENT ACCESS CLEARANCE</p> <p> EXHAUST FAN, WIRE AS SHOWN. SEE MECHANICAL DRAWINGS FOR MORE INFORMATION.</p> <p style="text-align: center;"><b>WIRING</b></p> <p>--- BELOW GRADE OR BENEATH SLAB</p> <p> NEUTRAL, HOT, SWITCH AND GROUND SYMBOLS</p> <p> HOME RUN X-YY, WHERE: • 'X' DENOTES PANEL NAME • 'YY' DENOTES CIRCUIT NUMBER</p> <p>○ ELLED UP</p> <p>● ELLED DOWN</p> <p>]- RACEWAY STUBBED OUT FOR FUTURE CONTINUATION. CAP, MARK, AND RECORD LOCATION.</p> <p> WALL-MOUNTED JUNCTION BOX</p> <p> FLUSH, FLOOR-MOUNTED JUNCTION BOX</p> <p> CEILING-MOUNTED JUNCTION BOX, MOUNT ABOVE ACCESSIBLE CEILINGS UNLESS OTHERWISE NOTED.</p> <p style="text-align: center;"><b>SIGNAL OUTLETS 18" ABOVE FINISHED FLOOR (TYP.)</b></p> <p> COMBINATION TELEPHONE/DATA OUTLET</p> <p> DATA OUTLET</p> <p> TELEPHONE OUTLET</p> <p> CLOSED CIRCUIT TELEVISION OUTLET</p> <p>NOTES: 1. COORDINATE WITH OWNER FOR MORE INFORMATION.</p>	<p> EMERGENCY EXIT LIGHT • WITH 90 MINUTE BATTERY BACKUP • 'X' REFERS TO THE LUMINAIRE TABLE</p> <p> COMBINATION EXIT/EMERGENCY LIGHTS • MFR: LIGHT FIXTURE INDUSTRIES • PART No. COMBORJR2 OR EQUAL • COORDINATE WITH OWNER FOR SUBSTITUTIONS • SHADING INDICATES ILLUMINATED SIDE</p> <p> EXIT SIGN • SHADING INDICATES ILLUMINATED SIDE</p> <p> PHOTOCCELL</p> <p> PARKING LIGHT</p> <p> LIGHT BAY</p> <p> WALLPACK</p> <p> TIME CLOCK</p> <p>NOTES: 1. LOWER CASE LETTERS INDICATE SWITCHING. SEE DETAIL FOR EXPLANATION. 2. NUMBERS INDICATE CIRCUIT NUMBERS. SEE PLANS FOR WHICH FIXTURES ARE FED FROM WHICH PANELS.</p> <p style="text-align: center;"><b>FIRE ALARM</b></p> <p> FIRE ALARM PULL STATION</p> <p> FIRE ALARM STROBE</p> <p> FIRE ALARM STROBE AND HORN</p> <p> FIRE ALARM CONTROL PANEL</p> <p> SMOKE DETECTOR</p> <p> HEAT DETECTOR</p> <p>NOTES: 1. CONTRACTOR IS RESPONSIBLE FOR VERIFYING FIRE ALARM COVERAGE MEETS LIFE SAFETY CODES AND PROVIDING ANY ADDITIONAL DOCUMENTATION TO PULL PERMIT.</p> <p>EXISTING FIRE ALARM SYSTEM NOTES: 1. FIRE ALARM CONTRACTORS TO PROVIDE A DESIGN BUILD FIRE ALARM DESIGN USING SUGGESTED DEVICE LOCATIONS AS A STARTING POINT ONLY. REQUIRED DESIGN AND CALCULATIONS SHALL BE PERFORMED BY A LICENSED FIRE ALARM CONTRACTOR. COORDINATE THE REQUIREMENTS WITH SUPPLIER OF EXISTING FIRE ALARM SYSTEM. 2. CONTRACTOR IS RESPONSIBLE FOR VERIFYING FIRE ALARM COVERAGE MEETS LIFE SAFETY CODES AND PROVIDING ADDITIONAL DOCUMENTATION TO PULL PERMIT. 3. OTHER ALARM DEVICES ALREADY EXIST. DEVICES ARE ONLY SHOWN IN AREAS WHERE WORK IS BEING DONE FOR THIS PROJECT.</p>			

## ELECTRICAL SPECIFICATIONS

A. THE ELECTRICAL CONTRACTOR SHALL PROVIDE AND INSTALL ALL ELECTRICAL FACILITIES IN ACCORDANCE WITH THE FOLLOWING SPECIFICATIONS, PLANS AND ASSOCIATED NOTES, NATIONAL ELECTRICAL CODE, STATE AND LOCAL CODES AND IN A NEAT AND WORKMANLIKE MANNER.

B. CONTRACTOR SHALL BECOME FAMILIAR WITH EXISTING CONDITIONS AT THE JOB SITE.

C. ALL UNFORESEEN CONDITIONS THAT MAY AFFECT SCOPE OF WORK/CODE VIOLATIONS, DISCOVERED DURING DEMOLITION/CONSTRUCTION, SHALL IMMEDIATELY BE BROUGHT TO THE ATTENTION OF THE ARCHITECT/OWNER/ENGINEER.

D. THE ELECTRICAL CONTRACTOR SHALL INSTALL ALL THERMOSTATS, CONTROLS AND MAKE REQUIRED CONNECTIONS TO EQUIPMENT FURNISHED BY OTHERS.

E. THE ELECTRICAL CONTRACTOR SHALL INCLUDE IN HIS BID THE COST OF ALL PERMITS, TESTS AND INSPECTIONS, AND VISIT THE SITE OF WORK PRIOR TO SUBMITTING BID..

F. THE ELECTRICAL CONTRACTOR SHALL GUARANTEE ALL WORK AND MATERIAL FOR A PERIOD OF ONE YEAR AFTER DATE OF ACCEPTANCE.

G. A SET OF MARKED UP PRINTS SHALL BE PREPARED SHOWING ALL CHANGES MADE DURING CONSTRUCTION AND TURNED OVER TO THE OWNER AT THE END OF THE CONSTRUCTION. ALL CHANGES MUST HAVE THE OWNER'S APPROVAL.

H. ANY DISCREPANCIES BETWEEN MATERIAL DESCRIPTION AND CATALOG NUMBER SHALL BE BROUGHT TO THE ARCHITECT'S ENGINEER'S OR OWNER'S ATTENTION IMMEDIATELY.

I. INTERRUPTION OF ANY ELECTRICAL SERVICES SHALL BE COORDINATED WITH THE OWNER AT LEAST 7 DAYS PRIOR TO THE INTENDED OUTAGE AND SHALL BE REQUESTED IN WRITING WITH A COPY TO THE ARCHITECT AND OWNER..

J. 3% VOLTAGE DROP LIMITATION FOR BRANCH CIRCUITS; ALL 20 AMPERE, 120 VOLT BRANCH CIRCUITS (16 AMPERE MAXIMUM LOAD) FEEDER LENGTHS SHALL BE LIMITED AS FOLLOWS:  
#12 AWG-61 LINEAR FT.  
#10 AWG-62 TO 97 LINEAR FT.  
#8 AWG-98 TO 154 LINEAR FT.

K. BRANCH CIRCUITS CAN BE COMBINED IN THE SAME RACEWAY ONLY WHEN EACH BRANCH CIRCUIT HAS A DEDICATED NEUTRAL. REFERENCE NATIONAL ELECTRICAL CODE ARTICLE 210 AND ALL OTHER ASSOCIATED ARTICLES.

L. ELECTRICAL CONTRACTOR SHALL PROVIDE A GROUND CONDUCTOR IN ALL BRANCH CIRCUITRY. CONDUIT SHALL SERVE AS REDUNDANT GROUND ONLY.

M. MAINTAIN THE SAME COLOR CODING FOR 120/208V-3 PHASE-4W CIRCUITS THROUGHOUT PROJECT.

N. ALL POWER AND LIGHTING CONDUITS SHALL BE 3/4" EMT CONDUIT MINIMUM, EXCEPT AS NOTED OTHERWISE OR REQUIRED FOR VIBRATION ISOLATION.

O. CONDUITS RUN EXPOSED ON CEILING OR WALLS SHALL BE DONE IN A NEAT AND WORKMANLIKE MANNER, MAKING ALL RUNS STRAIGHT AT PARALLEL OR PERPENDICULAR ANGLES TO BUILDING STRUCTURE.

R. ALL CONDUITS STUBBED ABOVE CEILING SHALL HAVE INSULATED TYPE BUSHINGS ON THE END.

S. LAY-IN CEILINGS AND SUPPORTS SHALL NOT BE UTILIZED AS A MEANS OF SUPPORT FOR ELECTRICAL CONDUIT OR EQUIPMENT.

T. CONTRACTOR SHALL PROVIDE AND INSTALL PULL WIRE IN ANY EMPTY CONDUIT.

U. ANY EXPOSED WIRE MOLD, CONDUITS, BOXES, ECT., SHALL BE PAINTED TO MATCH WALL FINISH THAT IT IS INSTALLED ON.

V. IN ALL CONDUIT WHERE EXISTING CIRCUITS ARE AFFECTED BY THE REMOVAL OF CONDUIT, WIRING, RECEPTACLES OR LIGHTING FIXTURES, THE BLOCKING OUT OF EXISTING OUTLET BOXES, ETC., AND THE CIRCUIT IS STILL REQUIRED TO FEED OTHER OUTLETS, ETC., WHICH ARE TO REMAIN THE ELECTRICAL CONTRACTOR SHALL RE-FEED AS REQUIRED THE ITEMS OF EQUIPMENT WHICH ARE TO REMAIN IN SERVICE AFTER THE COMPLETION OF THE REMODEL AT NO ADDITIONAL COST TO THE OWNER.

W. IT MAY BECOME NECESSARY FOR THE ELECTRICAL CONTRACTOR TO RELOCATE EXISTING CONDUIT, CHANNELS, AND OTHER SUPPORTS WHICH MAY PARTIALLY CONFLICT WITH SOME OF THE NEW OR RELOCATED RECESSED LIGHTING FIXTURES. CONTRACTOR SHALL RELOCATE THESE ITEMS AT NO ADDITIONAL COST TO THE OWNER.

X. CONTRACTOR SHALL REMOVE EXISTING PANEL BOARD DIRECTORIES FROM PANEL BOARDS AND REPLACE WITH NEW TYPED PANEL SCHEDULE DIRECTORIES FOR ALL AFFECTED PANELS. IF ROOM NUMBERS ARE USED IN TYPED DESCRIPTION, ACTUAL 'ON-DOOR' ROOM NUMBERS MUST BE USED. THESE MAY DIFFER FROM ROOM NUMBERS SHOWN ON THESE PLANS, INCLUDING ON PANEL SCHEDULES, NOTES, DETAILS, ETC.

Y. SIZE CIRCUIT WIRES AS REQUIRED BY THE NEC.

Z. ALL RECEPTACLES AND COVER PLATES SHALL BE WHITE. CONTRACTOR TO REPLACE ANY AND ALL THAT ARE EXISTING AND NOT WHITE OR BROKEN.



ARCHITECT/ENGINEER



**E2 DESIGN**  
CONSULTING SERVICES LLC  
505.400.1152 • mike.morgan.ee@gmail.com

**PMS ESTANCIA HEAD START - KITCHEN REMODEL**

600 10TH STREET  
ESTANCIA, NM 87016

**100% PERMIT DRAWINGS**

REVISION DATE

DATE 2/16/26

PROJECT NO -

**LEGEND & SPECIFICATIONS**

SHEET NO.

**E001**

**GENERAL NOTES**

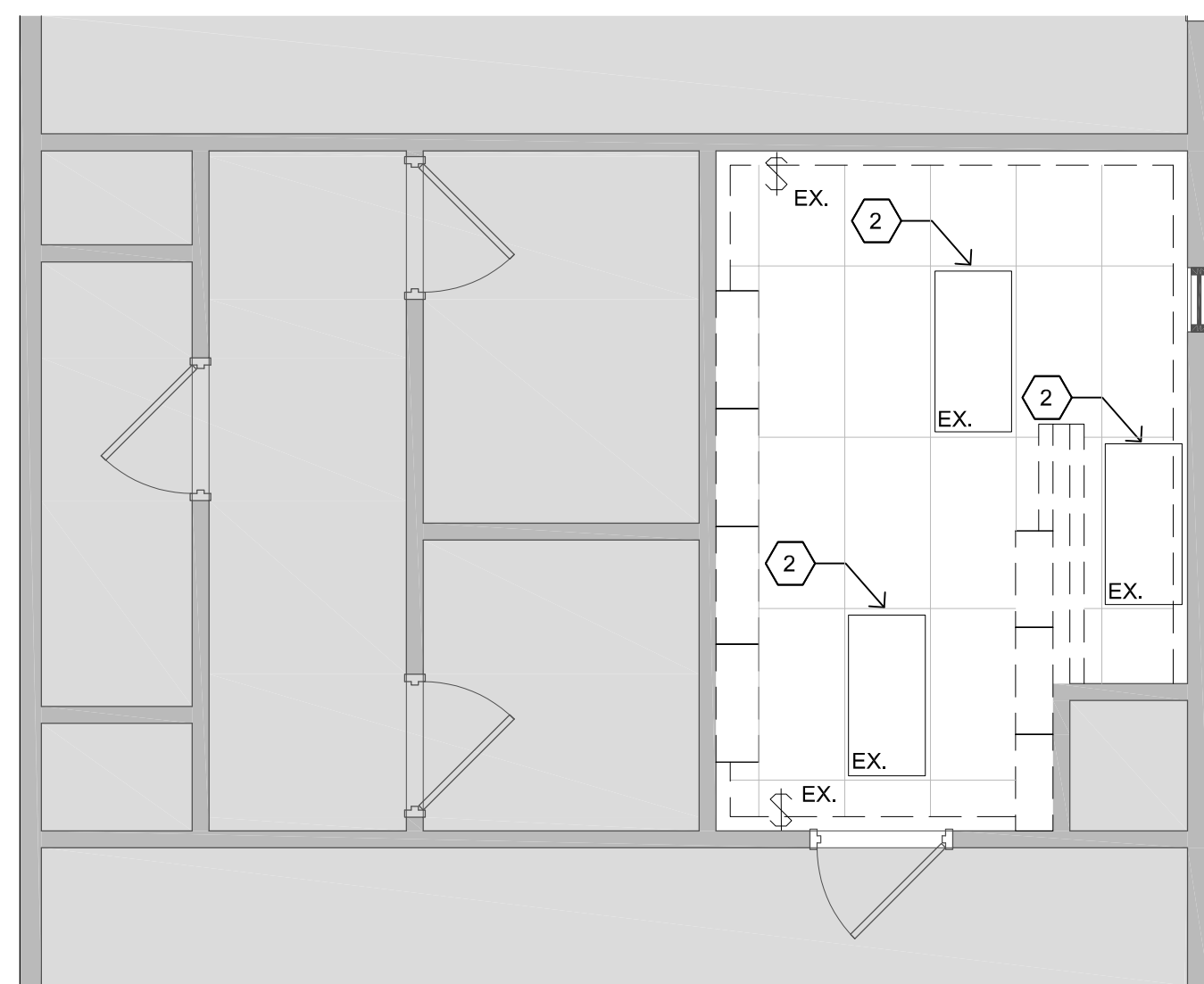
- A. ELECTRICAL CONTRACTOR SHALL FURNISH ALL REQUIRED PERMITS.
- B. ELECTRICAL CONTRACTOR SHALL GUARANTEE ALL WORK FOR ONE YEAR FROM COMPLETION OF PROJECT.
- C. ALL WORK PERFORMED UNDER THIS CONTRACT SHALL BE DONE IN STRICT ACCORDANCE WITH ALL STATE AND LOCAL CODES AND ORDINANCES, THE CURRENT EDITION OF THE NEC, THE RULES, AND REGULATIONS OF THE LOCAL ELECTRICAL COMPANY AUTHORITY, AND OTHER AUTHORITIES HAVING JURISDICTION OVER THE SAME. WHETHER SHOWN ON THE DRAWINGS OR NOT, ALL MODIFICATIONS REQUIRED BY ANY OF THE ABOVE AUTHORITIES SHALL BE MADE BY THE CONTRACTOR AT NO ADDITIONAL COST TO THE OWNER.
- D. THE ELECTRICAL CONTRACTOR SHALL INCLUDE IN HIS BID THE REMOVAL OF ALL ABANDONED CONDUIT, WIRE, BOXES, FIXTURE HANGERS, DEVICES ETC. FROM ALL ACCESSIBLE CEILING SPACES IN AREA OF WORK. THE CONTRACTOR SHALL ALSO INCLUDE IN HIS BID THE COST TO CORRECT ANY ELECTRICAL CODE VIOLATIONS, I.E., SUPPORTING EXISTING CONDUITS, ETC. IT IS HIGHLY RECOMMENDED FOR THE CONTRACTOR TO VISIT THE SITE TO UNDERSTAND THE EXTEND OF WORK REQUIRED.
- E. OWNER HAS FIRST RIGHT TO SALVAGE.
- F. THE BIDDER IS AWARE THAT ALL LIGHTING SYSTEMS, POWER SYSTEMS AND SPECIAL SYSTEMS ARE OPERABLE AND SHALL REMAIN OPERABLE AT PROJECT COMPLETION. THIS REQUIRES THE SUCCESSFUL CONTRACTOR TO "RING OUT" ALL CIRCUITS IN AREAS OF MODIFICATIONS PRIOR TO ANY WORK IN THOSE AREAS AND TO MAINTAIN ALL SUCH BRANCH CIRCUITING, CONTROLS AND SPECIAL SYSTEMS OPERATIONAL AFTER MODIFICATIONS.
- G. ALL DEVICE PLATES SHALL BE LABELED WITH PANEL NAME AND CIRCUIT NUMBER. LABELS SHALL BE HARD LABELS SECURELY ATTACHED TO DEVICE PLATE. RED/WHITE FOR EMERGENCY POWER, BLACK/WHITE FOR NORMAL POWER.
- H. ALL PANEL SCHEDULES SHALL BE LABELED WITH CORRECT CIRCUIT NAME IN PERMANENT MARKINGS.
- I. CONTRACTOR IS TO FIELD VERIFY EXISTING SITE CONDITIONS AND DIMENSIONS AND NOTIFY THE ARCHITECT OF ANY DISCREPANCIES.
- J. ELECTRICAL PLAN IS SCHEMATIC ONLY. THE ELECTRICAL CONTRACTOR SHALL COORDINATE ALL DEVICE LOCATIONS WITH OWNER/ARCHITECT PRIOR TO INSTALLATION.
- K. THE ELECTRICAL CONTRACTOR SHALL VERIFY ALL CIRCUIT BREAKER LOCATIONS ASSOCIATED WITH PROJECT AND UPDATE ELECTRICAL PANEL SCHEDULE AS NECESSARY.
- L. LOCATIONS ARE GENERAL FOR ELECTRICAL EQUIPMENT IF NOT SPECIFIED. COORDINATE WITH ARCHITECT AND OWNER FOR FINAL INSTALLATION LOCATIONS.
- M. ALL WORK PERFORMED UNDER THIS CONTRACT SHALL BE DONE IN STRICT ACCORDANCE WITH SIMON PROPERTY GROUP SPECIFICATIONS.
- N. ALL RECEPTACLES WITH IN 6 FEET OF WATER SOURCE NEEDS TO BE A GFCI RECEPTACLE.

**DEMO KEYED NOTES**

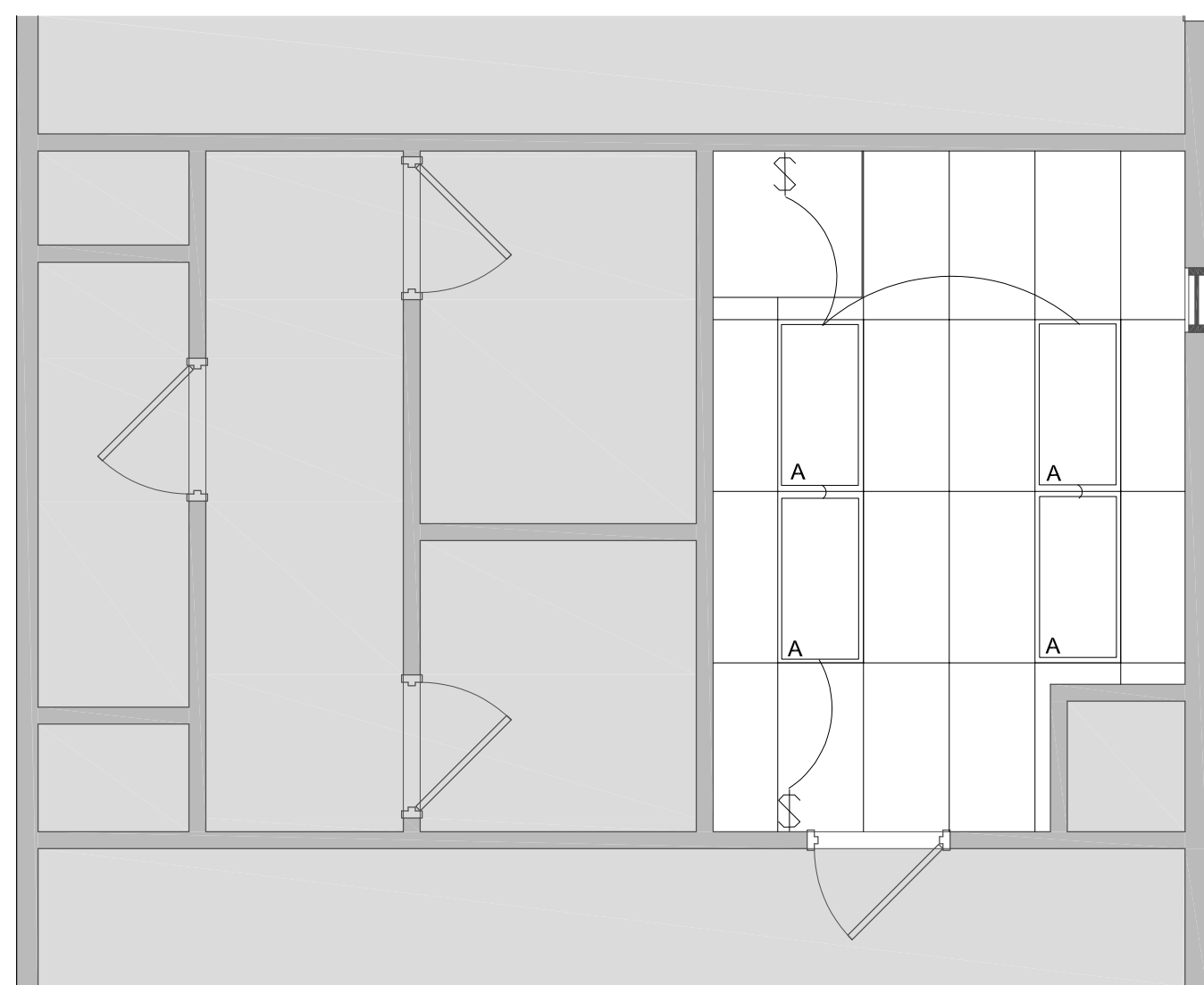
- 1. REMOVE EXISTING RECEPTACLES, JUNCTION BOXES, CONDUIT AND CONDUCTORS BACK TO ELECTRICAL PANEL (AS NEEDED). SEE E601 FOR MORE INFORMATION.
- 2. REMOVE EXISTING LIGHT FIXTURES, CONDUIT AND CONDUCTORS BACK TO JUNCTION BOX OR ELECTRICAL PANEL (AS NEEDED). CIRCUIT WILL BE REUSED FOR NEW LIGHTING FIXTURES.

**KEYED NOTES**

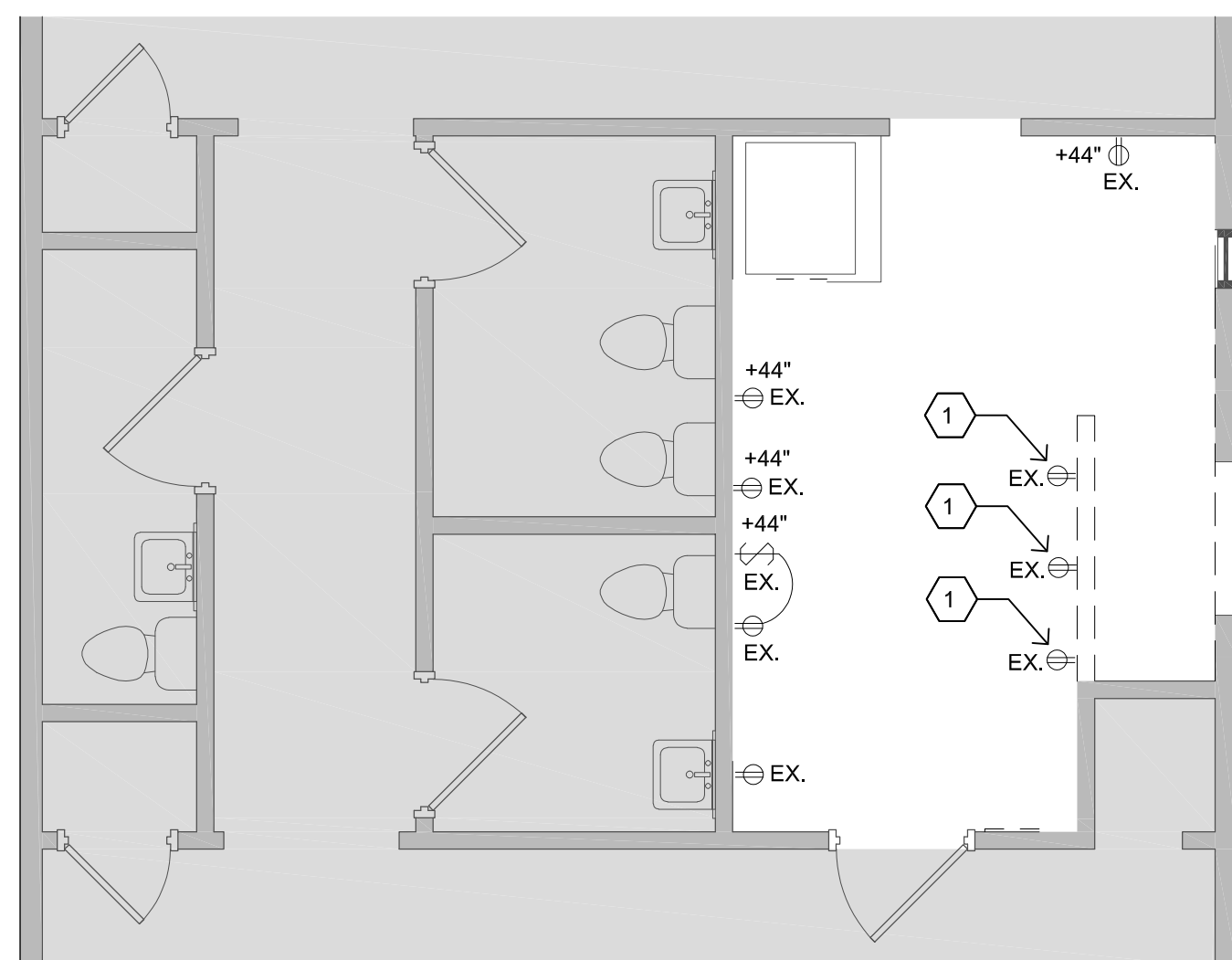
- 1. DEDICATED CIRCUIT FOR REFRIGERATOR. COORDINATE EXACT MOUNTING HEIGHT AND LOCATION WITH OWNER AND ARCHITECT PRIOR TO ROUGH-IN.
- 2. CONNECT CU-1 TO PANEL A. WIRE SHALL BE (2) #12 THW/THHN CU & #12G THW/THHN CU IN 3/4" CONDUIT, INSTALL PER MANUFACTURERS REQUIREMENTS. SEE SHEET E601 FOR MORE INFORMATION.
- 3. NOT USED.



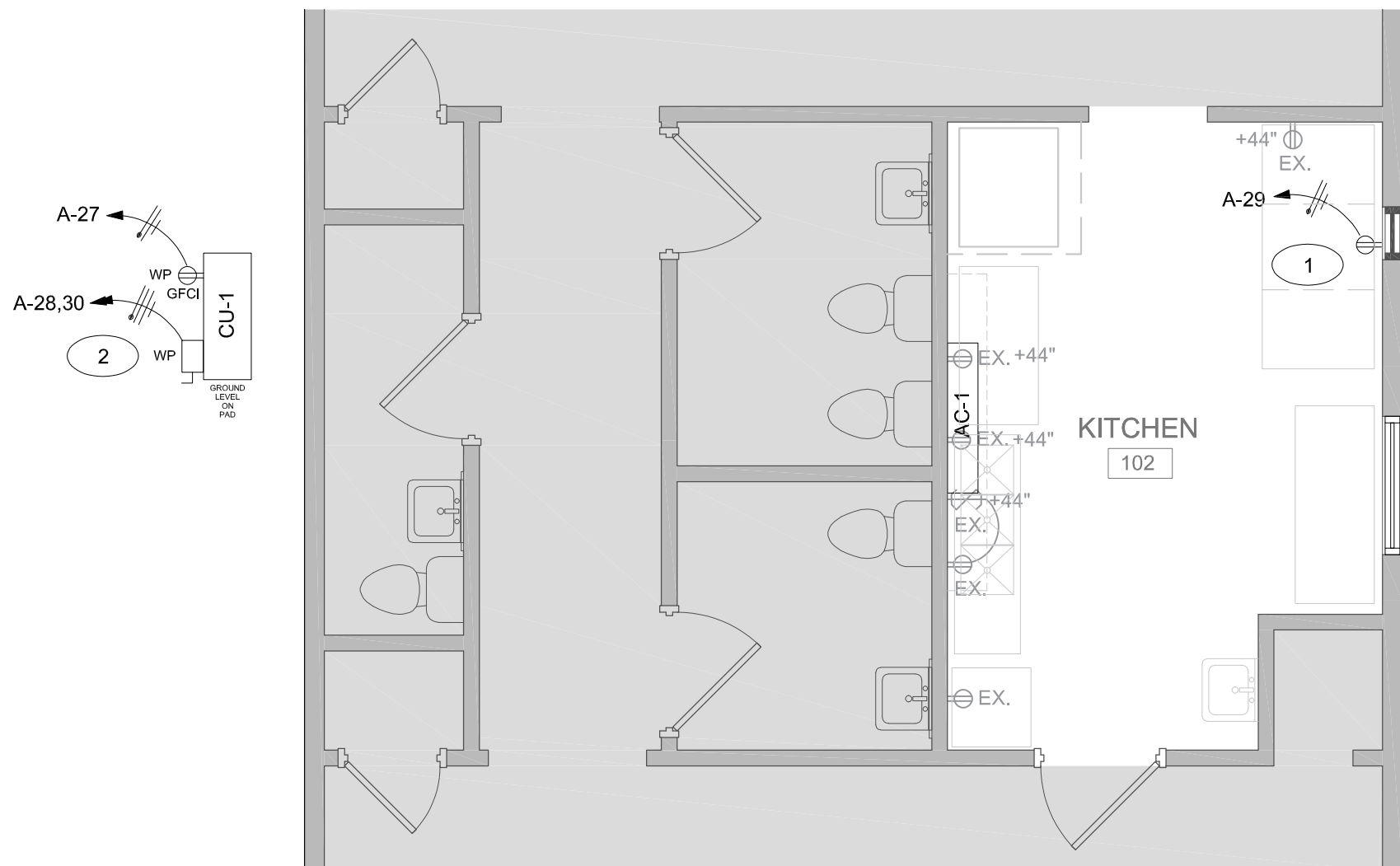
**C3 DEMO - LIGHTING FLOOR PLAN**  
1/4" = 1'-0"



**C4 NEW - LIGHTING FLOOR PLAN**  
1/4" = 1'-0"



**A3 DEMO - POWER FLOOR PLAN**  
1/4" = 1'-0"



**A4 NEW - POWER FLOOR PLAN**  
1/4" = 1'-0"

**100% PERMIT  
DRAWINGS**

REVISION DATE

DATE 2/16/26

PROJECT NO -

**POWER & LIGHTING  
FLOOR PLAN -  
DEMO + NEW**

SHEET NO.

**E101**

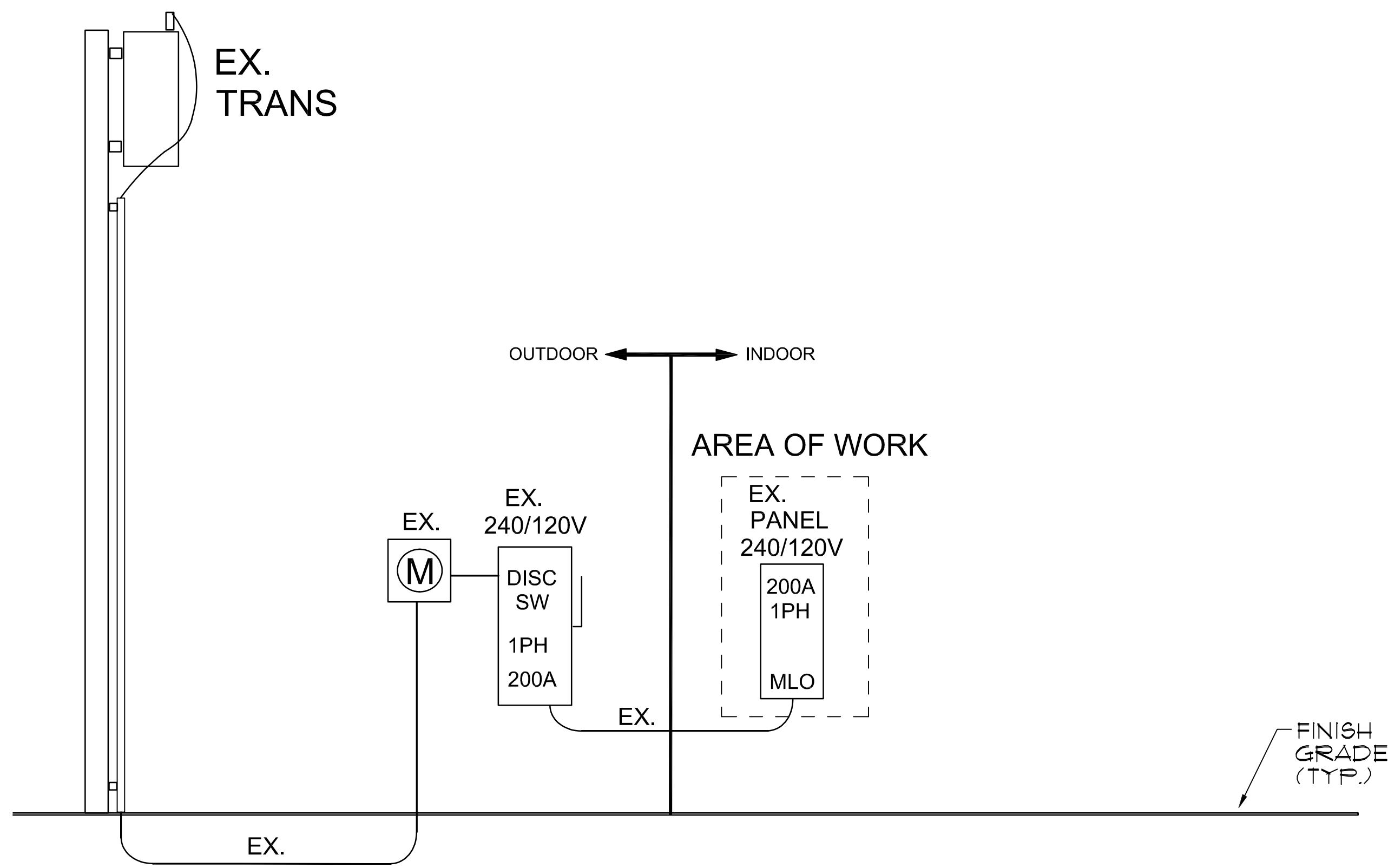
<b>PANEL: A</b> <b>VOLTAGE: 240/120V - 1Ø - 3 WIRE</b> <b>MAINS: 200A</b> <b>KAIC: 22000</b> <b>SOURCE: TRANS</b> <b>SHORTS: N/A</b> <b>FEED: TOP</b> <b>MAIN BREAKER: MLO</b> <b>MOUNTING: FLUSH</b>									
DESCRIPTION	BREAKER	LOAD (VA)	CCT No.	Load (VA)	CCT No.	LOAD (VA)	BREAKER	DESCRIPTION	
RECEPT	20/1	360	1	1160		2	800	20/1	LIGHTS
FIRE ALARM	20/1	360	3	1160	4	800	20/1	LIGHTS	
RECEPT	20/1	360	5	1160	6	800	20/1	LIGHTS	
RECEPT	20/1	1500	7	2300	8	800	20/1	LIGHTS	
RECEPT	20/1	1500	9	3000	10	1500	20/1	W/H	
RECEPT	20/1	1500	11	3000	12	1500	20/1	DISPOSAL	
H/W	30/2	2500	13	2860	14	360	20/1	RECEPT	
H/W	30/2	2500	15	2860	16	360	20/1	RECEPT	
HVAC	30/2	2568	17	3168	18	600	20/2	EF	
HVAC	30/2	2568	19	3168	20	600	20/2	EF	
RECEPT	20/1	360	21	2928	22	2568	30/2	HVAC	
RECEPT	20/1	1500	23	4068	24	2568	30/2	HVAC	
RECEPT	20/1	360	25	1860	26	1500	20/1	D/W	
SERVICE RECEPT	20/1	180	27	1680	28	1500	20/2	NEW MINI SPLIT	
NEW RECEPT	20/1	1500	29	3000	30	1500	20/2	NEW MINI SPLIT	
<b>TOTAL LOAD (VA):</b>				19,136	18,236				
<b>CONNECTED LOAD (KVA):</b>				37.4	<b>DEMAND LOAD (KVA):</b>	37.4	<b>GROUND BUS</b>		
<b>CONNECTED (AMPS):</b>				156	<b>DEMAND (AMPS):</b>	156			

**PANEL SCHEDULE KEY NOTES**

- 1 EXISTING PANEL.
- 2 PROVIDE AND INSTALL 240V/2-POLE/20A HACR BREAKER. NEW CIRCUIT BREAKER SHALL MATCH EXISTING AIC RATING AND MEET THE MINI SPLIT MANUFACTURERS REQUIREMENTS.
- 3 PROVIDE AND INSTALL 120V/1-POLE/20A BREAKER. NEW CIRCUIT BREAKER SHALL MATCH EXISTING TYPE AND AIC RATING.

POWER LOAD SUMMARY	
DESCRIPTION: EXISTING PANEL "A" LOAD	
NEW LOAD	4.7 KVA
EXISTING LOAD	32.7 KVA
<b>TOTAL LOAD:</b>	<b>37.4 KVA</b>
PANEL SIZE	200A, 120/240V, 1PH
PANEL (DEMAND) LOAD	156.0 AMPS
PANEL LOADING - 78% < 100%	

**PANEL SCHEDULE**



**ELECTRICAL RISER DIAGRAM**

NOT TO SCALE

2021 INTERNATIONAL ENERGY CONSERVATION CODE COMPLIANCE	
Interior Lighting	Exterior Lighting
Building Area Type: FOOD PREPARATION	Tradable Watts Allowed: N/A
Allowed LPD (w/ft²): 1.09	Non-Tradable Watts: N/A
Square Footage: 176	Actual Tradable Watts: N/A
Total Watts Allowed: 192	Additional 5% Allowance: N/A
Actual Watts: 144	
This Project is in Compliance with 2021 IECC	
The Electrical Power and Lighting Commercial Energy Efficiency Requirement of IECC 2021, Chapter 5 are met by adhering to the Requirements of ASHRAE/IESNA 90.1-2021 (2021 IECC, Chapter 4, Section C405)	
<b>Power Requirements</b>	
Feeder Conductors Have Been Designed for a Maximum Voltage Drop of 2 Percent.	
Branch Circuit Conductors Have Been Designed For a Maximum Voltage Drop of 3 Percent.	
<b>Interior Requirements</b>	
Exit Signs 5 Watts or less per Sign Are Provided.	

PER IECC 2021, TABLE C405.3.2(2), THIS SPACE IS DEEMED FOOD PREP AREA, ALLOWED 1.09W/SQ.FT. THIS SPACE IS IN COMPLIANCE.

LIGHTING SCHEDULE									
Symbol	Quantity	Manufacturer	Catalog Number	Description	Lamp	Number Lamps	Number Fixtures	Fixture Watt	wattage (W)
A		LITHONIA	CPANL 2X4 AL06 SWW7 M2 OR EQUIVALENT	CPANL LED	LED	1	4	36	144
								<b>Total Watts</b>	<b>= 144</b>



ARCHITECT/ENGINEER



**E2 DESIGN**  
CONSULTING SERVICES LLC  
505-400.1152 • mike.morgan.ee@gmail.com

**PMS ESTANCIA HEAD START - KITCHEN REMODEL**

600 10TH STREET  
ESTANCIA, NM 87016

100% PERMIT DRAWINGS

REVISION      DATE

DATE      2/16/26

PROJECT NO      -

RISER DIAGRAM & SCHEDULES

SHEET NO.

**E601**